



CANADIAN COPPER

Commodities that *electrify our world.*

**COPPER EXPLORATION
& DEVELOPMENT IN PROLIFIC
BATHURST CAMP**

New Brunswick, Canada



**EXCELLENT MINING
JURISDICTION**

NET ZERO EXPLORATION

STRONG ASSET BASE

**GROWING COPPER
RESOURCES**

CSE: CCI



DISCLAIMER

This presentation contains “forward-looking information” which may include, but is not limited to, statements with respect to the future financial or operating performance of Canadian Copper Inc. (“CCI” or the “Company”), and its projects, the COMEX price of copper (“Cu”), the estimation of Mineral Resources, operating and exploration expenditures, costs and timing of development of new deposits, costs and timing of future exploration, requirements for additional capital, government regulation, environmental risks, reclamation expenses, title disputes or claims and limitations of insurance coverage. Often, but not always, forward-looking statements can be identified by the use of words such as “plans”, “expects”, “is expected”, “budget”, “scheduled”, “estimates”, “forecasts”, “intends”, “anticipates”, or “believes” or variations (including negative variations) of such words and phrases, or state that certain actions, events or results “may”, “could”, “would”, “might” or “will” be taken, occur or be achieved.

Forward-looking statements involve known and unknown risks, uncertainties and other factors which may cause the actual results, performance or achievements of CCI to be materially different from any future results, performance or achievements expressed or implied by the forward-looking statements. Such factors include, among others, general business, economic, competitive, political and social uncertainties; the actual results of current exploration activities; conclusions of economic evaluations; changes in project parameters as plans continue to be refined; future prices of Cu; possible variations of ore grade or recovery rates; failure of plant, equipment or processes to operate as anticipated; accident, labour disputes and other risks of the mining industry; and delays in obtaining governmental approvals or financing or in the completion of development or construction activities.

Although CCI has attempted to identify important factors that could cause actual actions, events or results to differ materially from those described in forward-looking statements, there may be other factors that could cause actions, events or results to differ from those anticipated, estimated or intended. Forward-looking statements contained herein are made as of the date of this presentation and CCI disclaims any obligation to update any forward-looking statements, whether as a result of new information, future events or results or otherwise.

There can be no assurance that forward-looking statements will prove to be accurate, as actual results and future events could differ materially from those anticipated in such statements. CCI undertakes no obligation to update forward-looking statements if circumstances or management’s estimates or opinions should change. Accordingly, the reader is cautioned not to place undue reliance on forward-looking statements.

All scientific and technical information contained in this corporate presentation was prepared and approved by Michael Dufresne, M.Sc., P.Geo., P. Geol, who is a Qualified Person as defined by NI 43-101. Mr. Dufresne has verified the scientific and technical information disclosed in this presentation by reviewing and referencing published scientific papers, and historical and current technical reports related to the Company’s properties that outline their geology and structure, mineralization potential, and deposit style.

The historical resource estimate is based on prior data and reports obtained and prepared by previous operators, and information provided by governmental authorities.

a qualified person has not done sufficient work to classify the historical estimate as current mineral resources or mineral reserves.

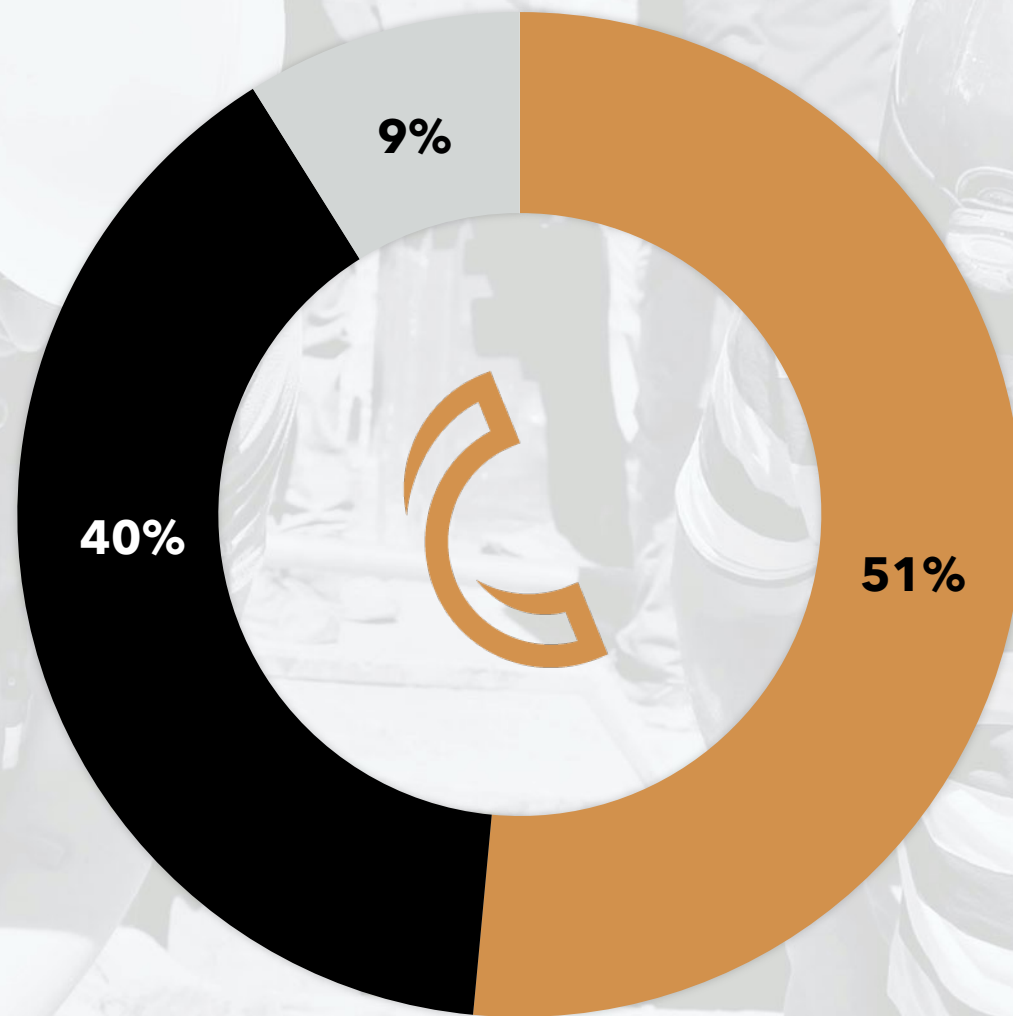
the issuer is not treating the historical estimate as current mineral resources or mineral reserves.

Establishing a current mineral resource estimate on the projects of the Company will require further evaluation, which the Company and its consultants intend to complete in due course.

OWNERSHIP, FINANCING & CAPITALIZATION

CAPITAL STRUCTURE

Share Price (C\$)	\$0.09
Current S/O	70.5M
Average Volume	.100M
Market Cap	\$6M
Cash	\$1.0M
Warrants	2.7M
Options	1.6M
Fully Diluted	74.7M



 Retail Investors
 Founders and Management
 Puma Exploration Inc.



OUR VISION & MISSION

Commodities that electrify our world.



IDENTIFY, DEFINE, INCREASE:

- Well-establish mining camp.
- Expand already clear resource base, new MRE.
- Apply local geologic model at regional scale.



RISK ADJUSTED EXPLORATION:

- Tier-one mining jurisdiction (permitting, tax structure, legal framework).
- Geologic conditions: prospect, trench, explore.
- Strong local partner.
- VMS deposits are higher grade, smaller footprint, reduced development risk.



COMMODITIES WITH STRONG DEMAND:

- Copper demand set to double < 15 years.
- Net Zero goals will drive metal consumption.
- Electrification ambitions diversity metal economic driver.



A COMPELLING INVESTMENT CASE FOR COPPER

& copper and base metal explorers



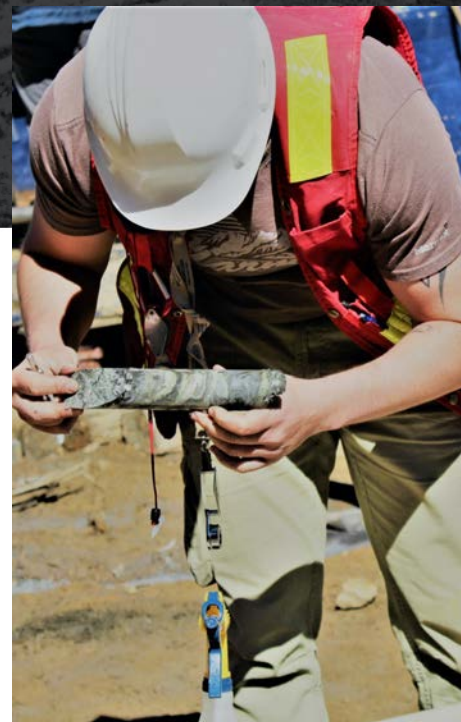
MARKET DEFICIT

- Global copper demand to exceed supply by six million tonnes by 2030
- Limited capital investment in new mines, community & environmental resistance, falling ore grades, deposits are deeper
- Recent downturn impacting new development projects



GREEN ENERGY TRANSITION

- Renewable power consumes +4x more copper
- Electric vehicle's consume +3x more copper
- +75% of world copper is used to produce electrical wires, power grids, and motherboards



DEMAND DIVERSIFICATION

- Industrial nations committed to decarbonization through electrification
- Refined Cu consumption/capita continues to rise

In 2021, global copper deficit was 2%, spot prices increased 25% that year.

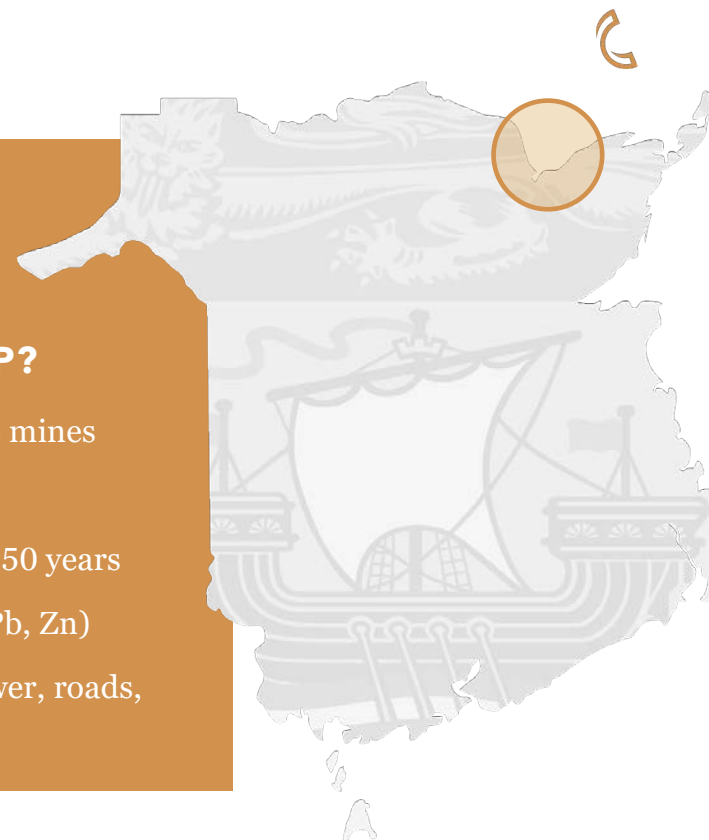
WE ARE COPPER EXPLORERS

Focused in Bathurst, New Brunswick

- ➔ **GROWING RESOURCE BASE**
- ➔ **+16,000 HECTARES IN PROLIFIC CAMP**
- ➔ **OPTION TO ACQUIRE 100% OWNERSHIP**

WHY THE BATHURST CAMP?

- Hosts >45 VMS Deposits, long life mines
- Produced ~2B pounds of copper
- Brunswick #12 Mine operated for 50 years
- Produced 136 M tons of ore (Cu, Pb, Zn)
- Excellent infrastructure (port, power, roads, labour)



WHY INVEST IN CANADIAN COPPER?

GROWING Mineral Resources at Chester: **<100M lbs Cu, now +150M lbs Cu!**

Continued exploration at Chester, new MRE exhibits growth potential

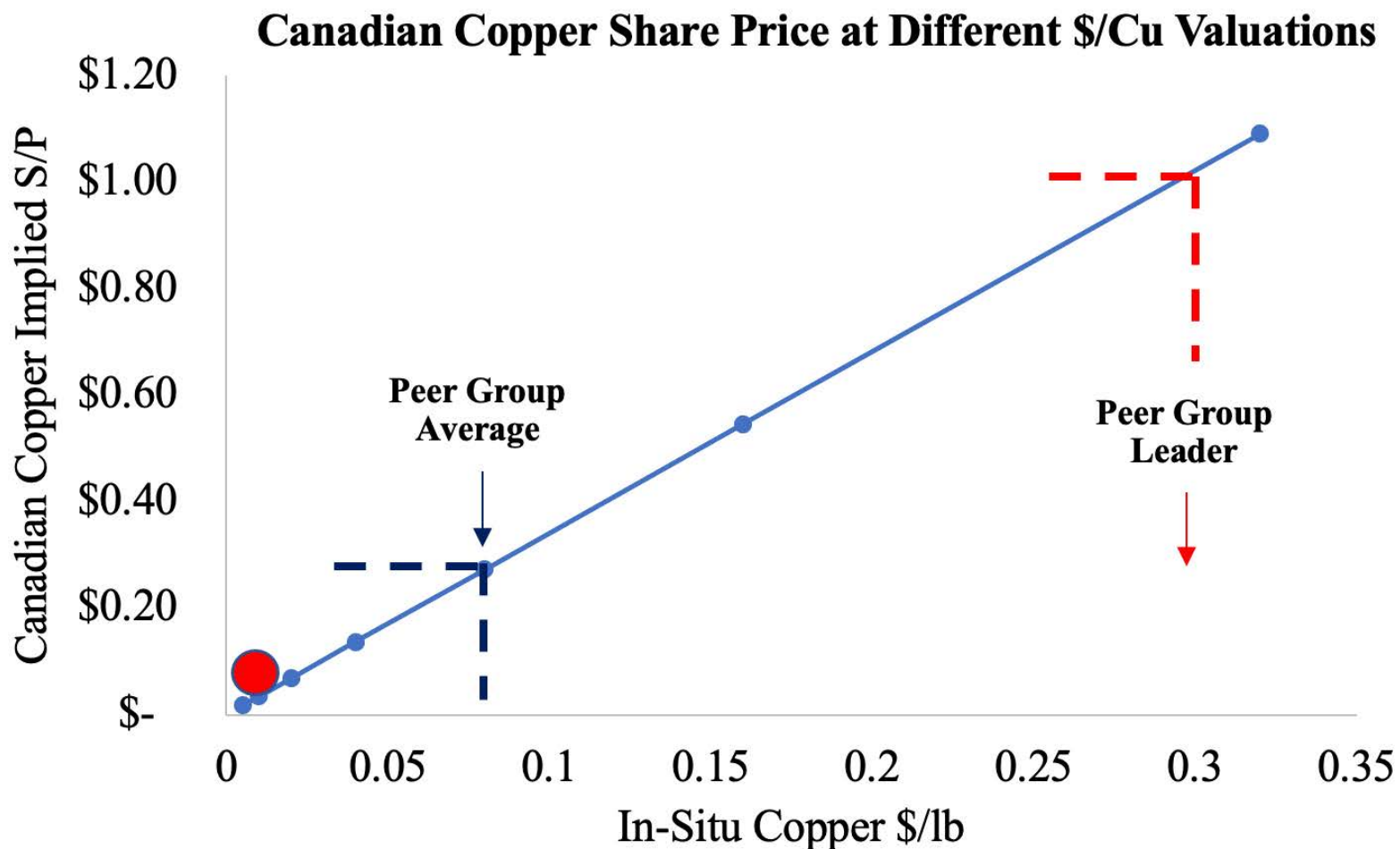
Attractive valuation to peers:
\$0.023/lb Cu versus \$0.10/lb Cu
 (EV/CuEq)

Significant insider ownership

Experienced local team with >15 years exploring BMC

Option to acquire 100% ownership across 5 properties in Bathurst Camp (BMC)

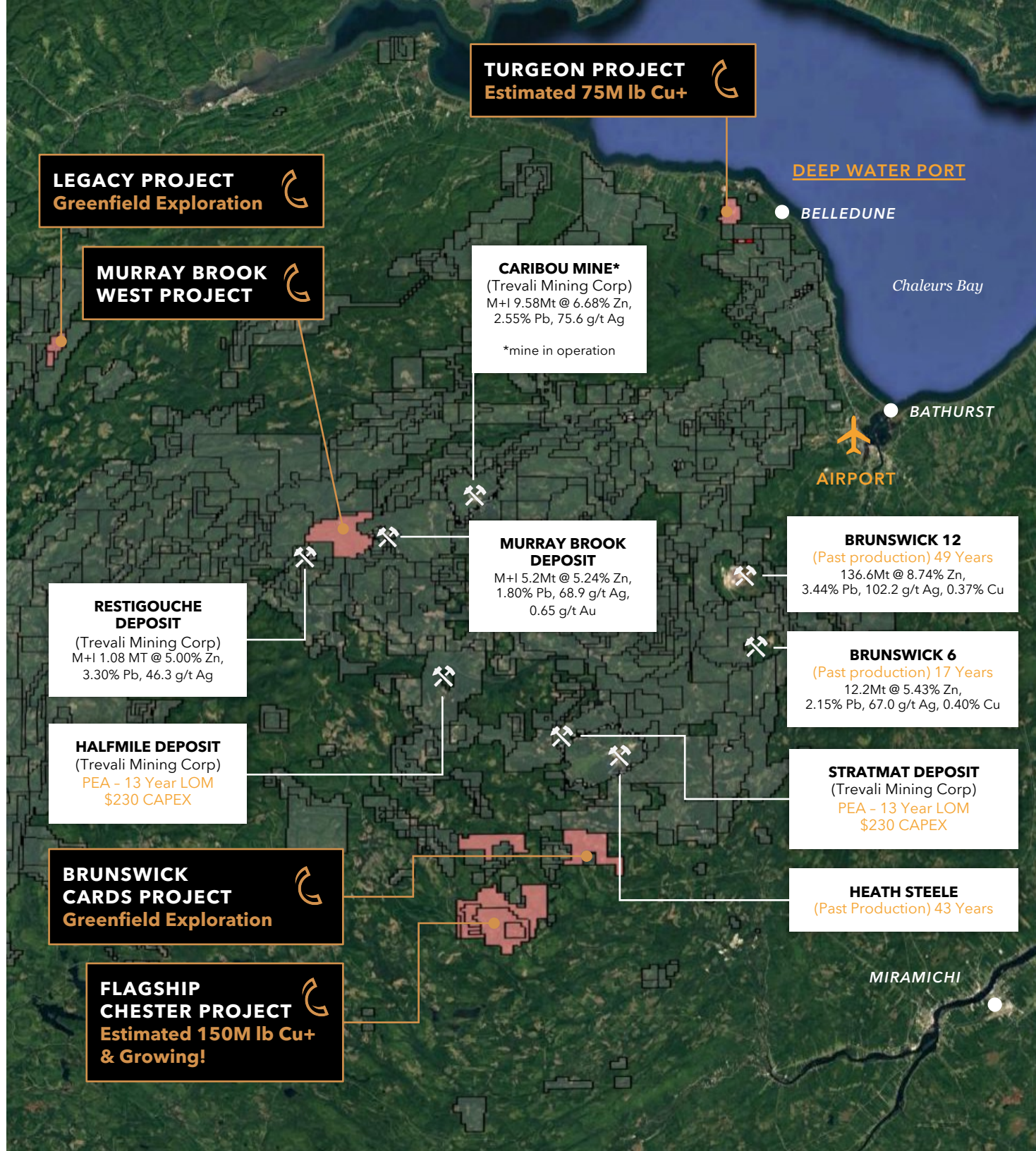
CANADIAN COPPER VALUATION TO PEERS



PROJECT PORTFOLIO



BELLEDUNE PORT

NORTH OF NEW BRUNSWICK,
CANADA



FLAGSHIP CHESTER PROJECT

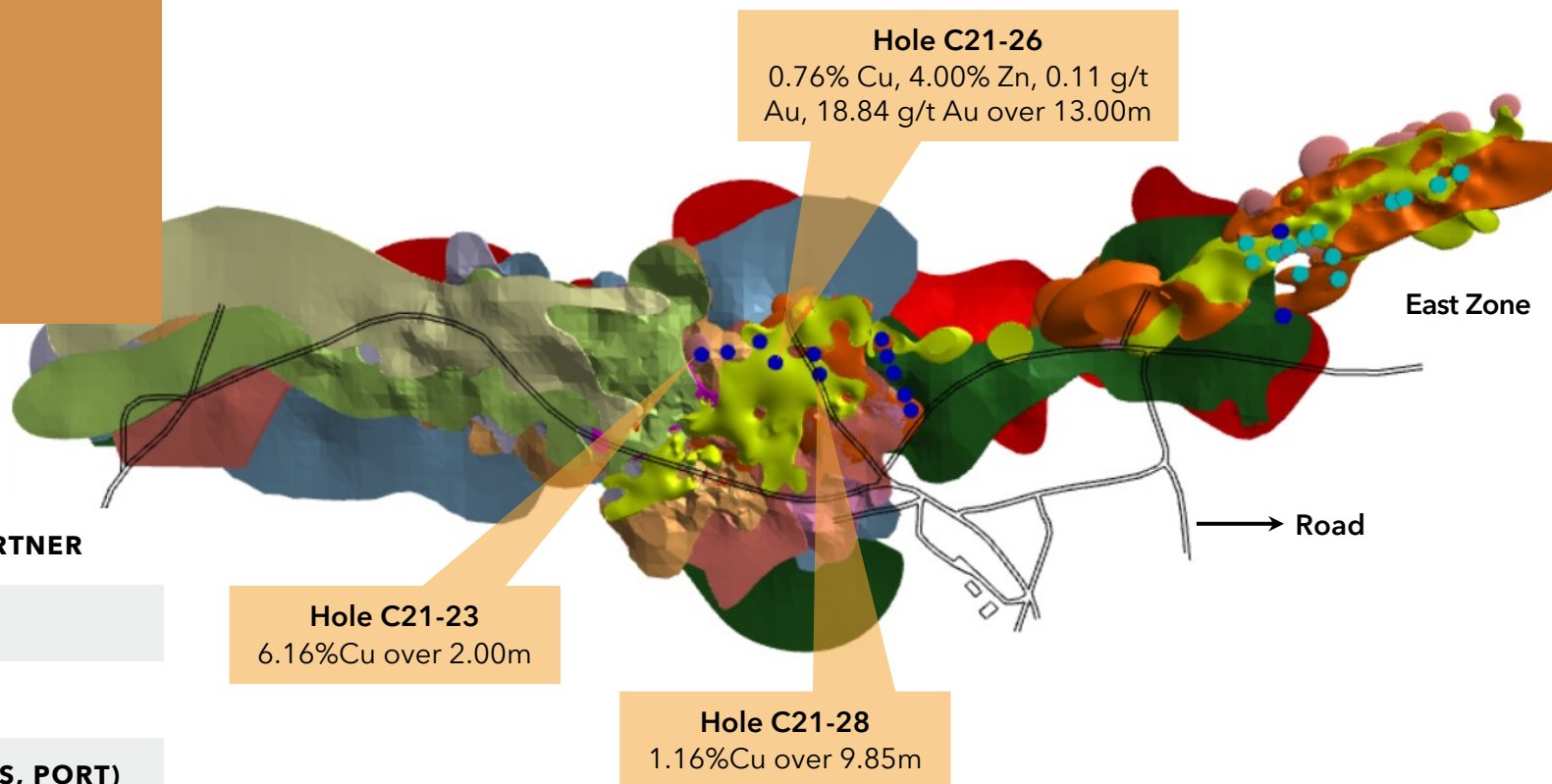
*Objective:
Keep Growing
Resource Base!*

New Chester MRE
Measured - Inferred
4.8Mt @1.3% Cu
1.8Mt @ 1.01% Cu

4.9% Cu over 14.2m
8.0% Cu over 5.2m
6.0% Cu over 13.1m
3.4% Cu over 25.0m
4.8% Cu over 20.3m

**Massive
Sulphide Zones**
(Included in new
resource)

10.8% Zn + 4.5% Pb over 5.6 m
7.4% Zn + 2.3% Pb over 6.1 m
8.0% Zn + 3.9% Pb over 7.0 m
8.5% Zn + 4.0% Pb over 7.9m
7.0% Zn + 2.6% Pb over 15.6 m



EXPERIENCED STRATEGIC PARTNER

HIGH-GRADE CU, ZN, PB

GOSSAN AT SURFACE

KEY INFRASTRUCTURE (ROADS, PORT)

OPEN AT DEPTH & ALONG STRIKE

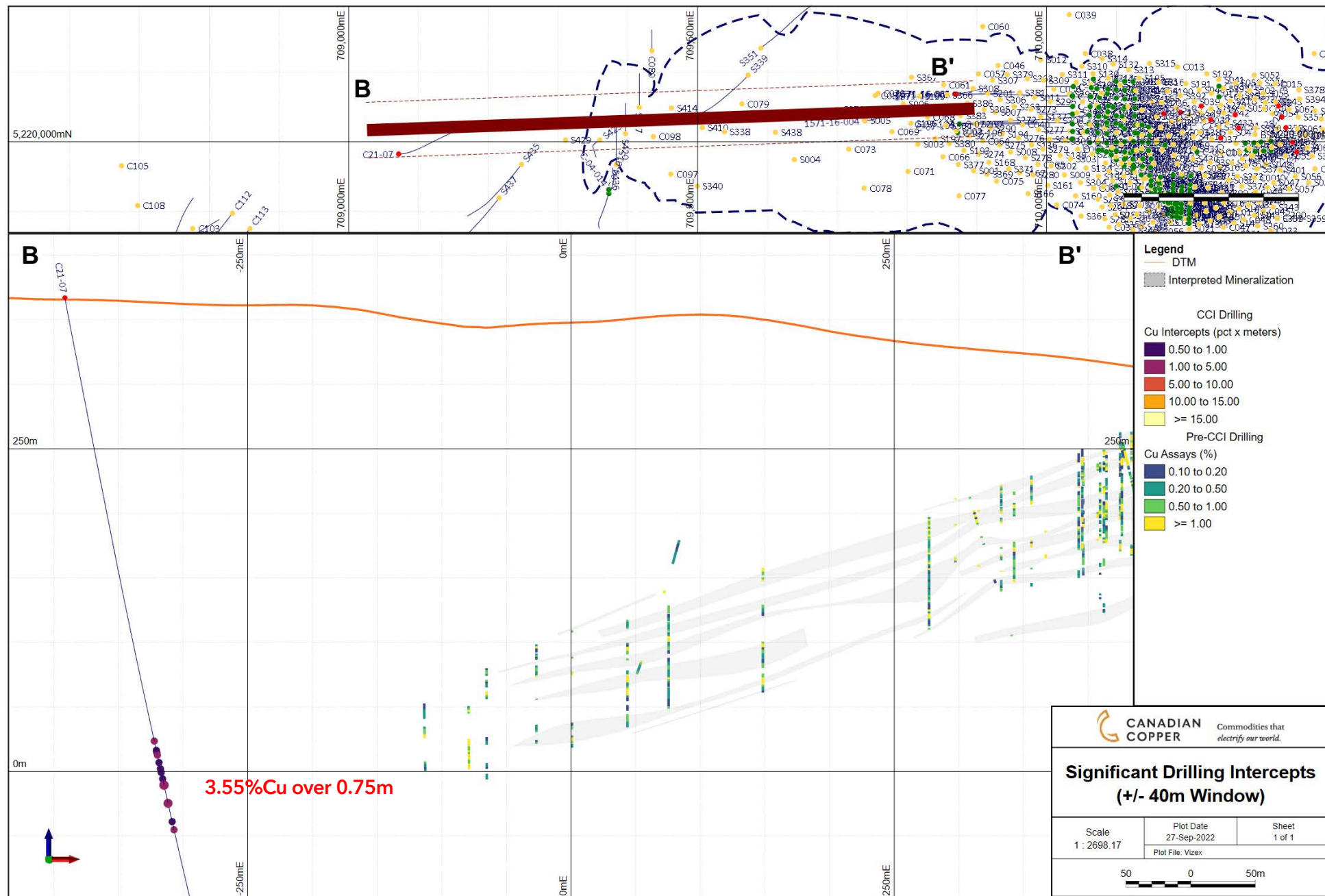
ROBUST GEOLOGIC MODEL

● Drillholes released on October 4, 2022

● Drillholes released on September 12, 2022



C21:07 - 200-meter Step-out





MILESTONES ACHIEVED & 2022-2023 OBJECTIVES

Q3 2022 ✓

- Activate regional prospecting activities across portfolio
- Announce Chester Phase 1 drilling results
- Announce Chester Phase 2 drilling results
- Announce new mineral resource estimate (MRE) at Chester

**Now 150M lbs Cu
@ +1%**

Q4 2022

- Chester regional exploration update
- Advance Chester MRE:
 - OP concept study, metallurgical test work (focused on East and Central Zone)
 - Concept mine plan to help focus drilling

Q1 2023

- Develop exploration targets for 2023 based on MRE + winter trenching program
- Review implications to concept mine plan, metallurgical work, develop 2023 spring drill program

Q2-Q3 2023

- Start next phase of exploration at Chester:
 - Test trenching 2022 anomalies
 - Targeted drill holes upgrading Chester deposit, including expansion on C21-07
- Begin regional trenching at Murray Brook

REGIONAL EXPLORATION: CHESTER DEPOSIT

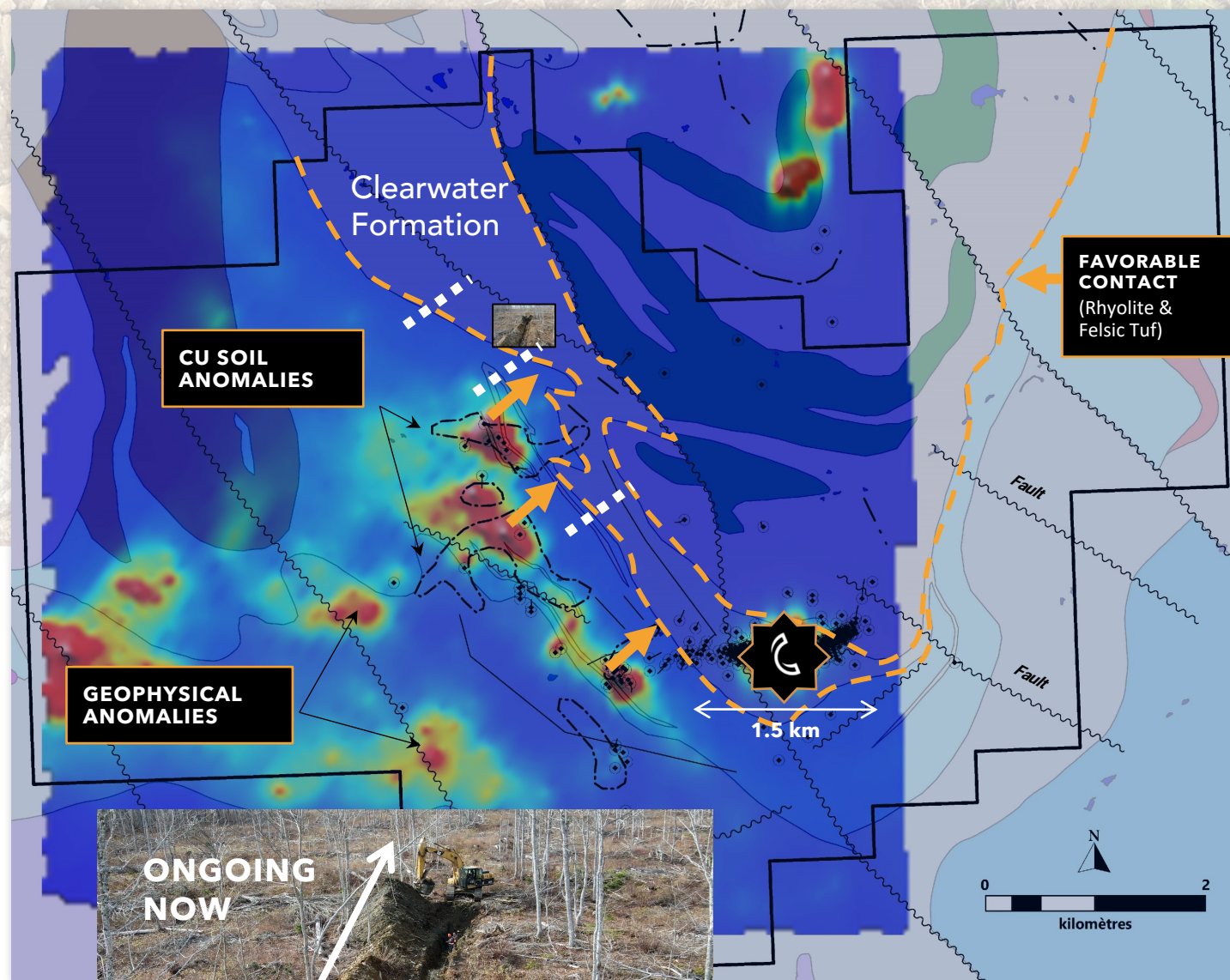
Objective:

Identify additional VMS deposits.

Nearly 9,000 hectares

Q4 2022 PROGRAM

- **3,500+ meter trenching**, soil surveys, and regional prospecting
- Testing Cu soil (+1% Cu) + VTEM anomalies
- **Cost effective exploration:**
 - ✓ **Trenching \$35/meter vs. \$300/meter drilled**
 - ✓ **Increases drilling success rate**



CHESTER DEPOSIT



CONTACT TARGET

NEXT STEPS FOR CHESTER

FURTHER EXPLORE LIMITS OF DEPOSIT

- Down dip and along strike to the west
- Gaps exist between Central and East Zone
- Untested deep geophysical targets below known zones

REGIONAL EXPLORATION PROGRAM ONGOING

- Active trenching program + 4km away from known deposit
- +4000 meter program underway

MET PROGRAM AND CONCEPT MINE PLAN

- Central and East Zone flotation program in process
- Open pit concept study in process

INVESTIGATE ORE SORTING POTENTIAL

- Test ore body heterogeneity and bulk mining applications

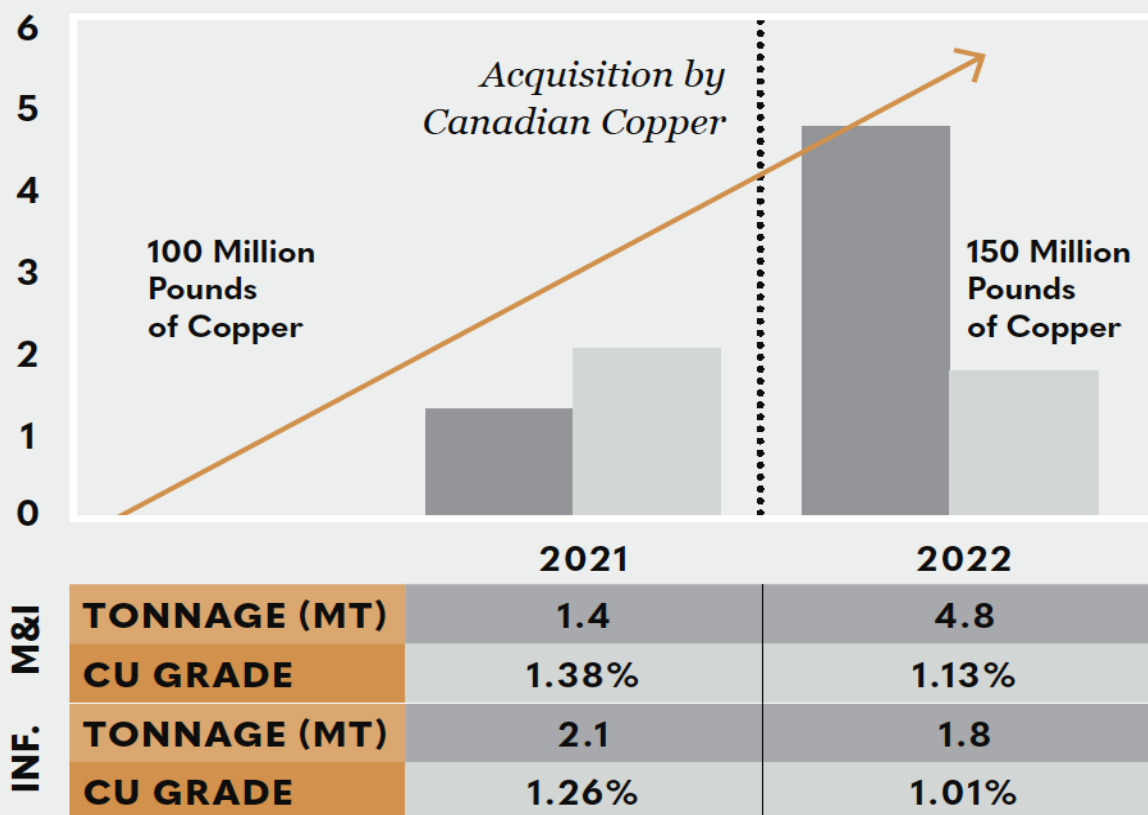
**ACQUISITION
MEASURE & INDICATED
INFERRED**

**PRE
1.4
2.1**

**POST
4.8
1.8**

MINERAL RESOURCE GROWTH SINCE ACQUISITION

Pre & Post Acquisition Mineral Resource Increase at Chester



+ 4,000 Meters Drilling



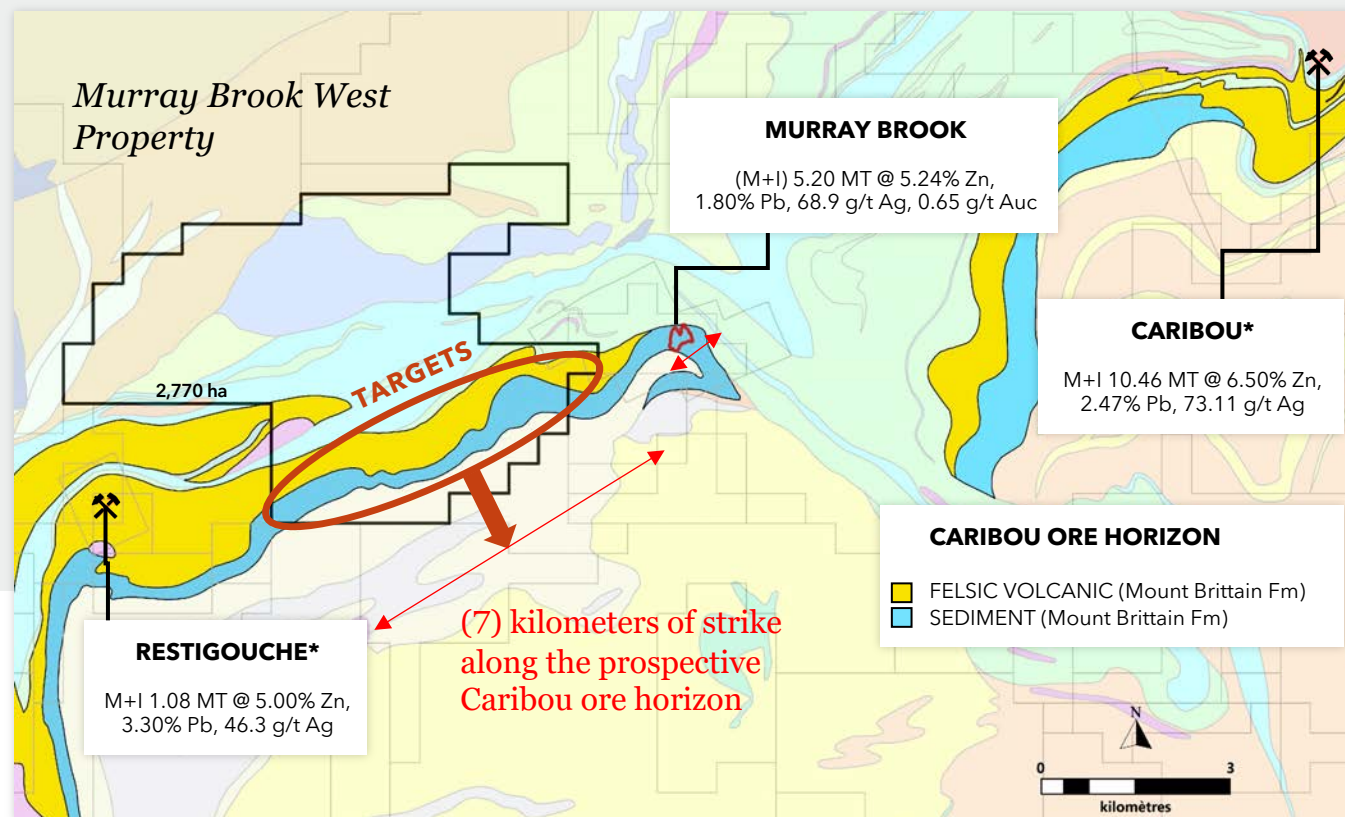
REGIONAL EXPLORATION: MURRAY BROOK WEST

Objective:
Explore highly prospectus
Caribou trend.

Nearly 3,000 hectares

2022-2023 PROGRAM

- Trenching, soil surveys, and regional prospecting
- Prospecting activities along underexplored trend





REGIONAL EXPLORATION: TURGEON

CLOSE UP

*Potential of Multiple
Mineralized Lenses*

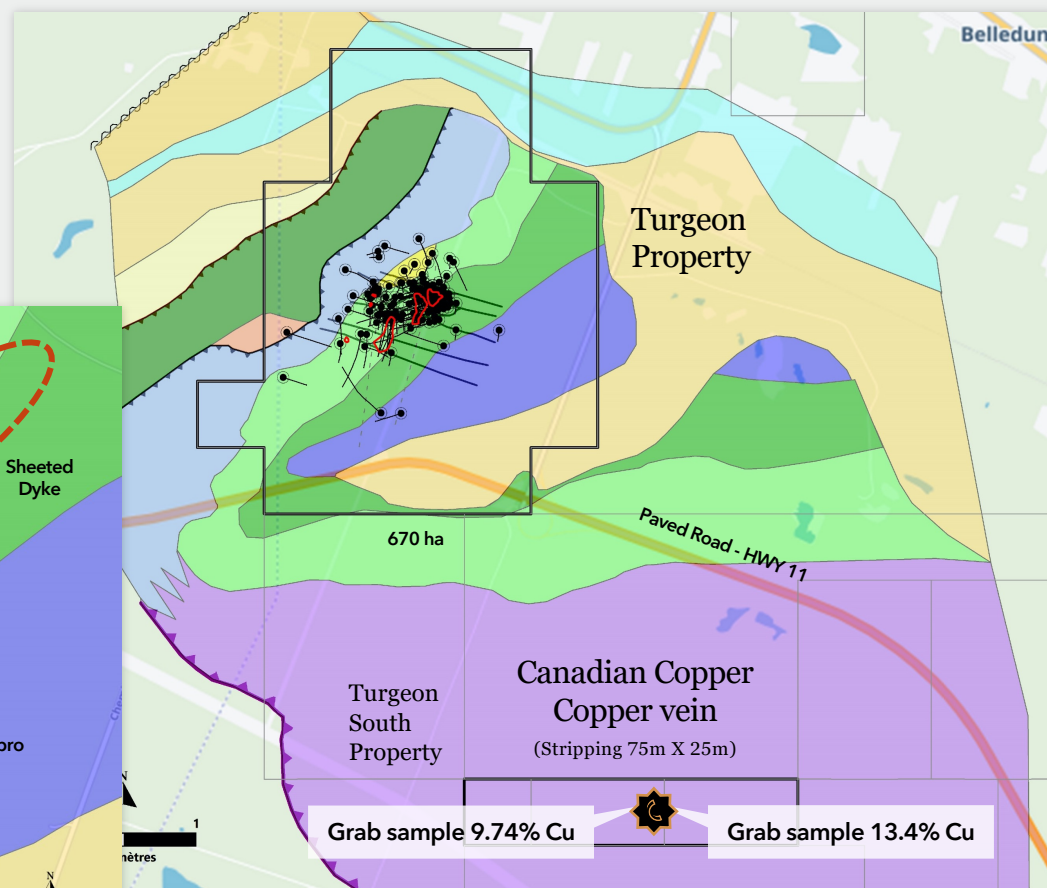
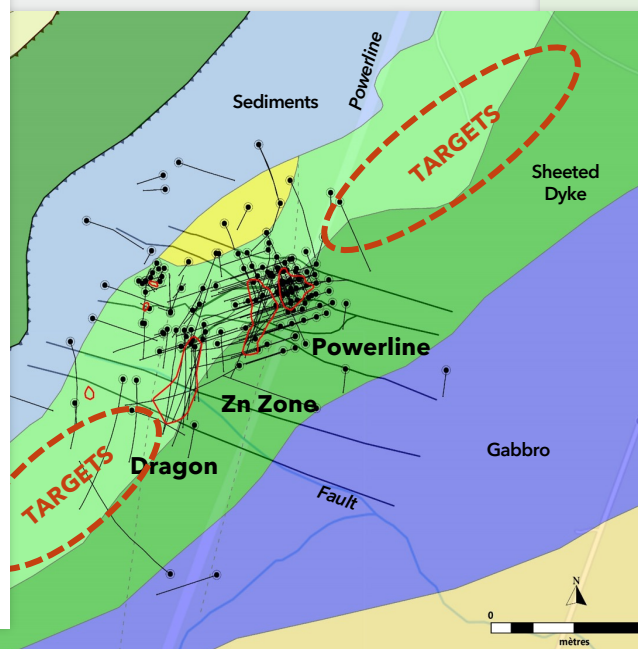
DRILLING RESULTS

Stringer zone

3.5% Cu / 11.5 m
7.9% Cu / 7.5 m
2.3% Cu / 32.6 m
4.4% Cu / 17.2m

MS zone

1.1% Cu + 9.2% Zn / 7.9 m
0.8% Cu + 12.4% Zn / 8.7 m
2.1% Cu + 1.9% Zn / 8.3m
1.0% Cu + 2.7% Zn / 72.2 m
1.1% Cu + 4.7% Zn / 25.1m





CANADIAN COPPER

Adding base metal resources responsibly



**EXCELLENT
JURISDICTION**



**EXISTING
HISTORIC
RESOURCES
WITH GROWTH
POTENTIAL**



**ROBUST
REGIONAL
EXPLORATION**



**EXPERIENCED
MANAGEMENT
WITH RECORD
OF SUCCESS**



MANAGEMENT & DIRECTORS

Complimentary Skillsets



SIMON QUICK

CEO, Director

Former VP Projects of McEwen Mining. 13+ years mining experience spanning USA, Mexico, Argentina, and Canada. Experience includes permitting, project development and construction of two mines. Honors degree in Economics from Bishop's University and an Executive MBA from Kellogg at Northwestern University.



MARCEL ROBILLARD

Director

Current CEO of Puma Exploration Inc. 20+ years of exploration experience as both project geologist and consultant. Spent 15+ years exploring Bathurst New Brunswick mining camp. B.Sc. Degree in Geology and a Masters in Earth Sciences from University of Quebec.



ANDRE TESSIER

Director

Currently CEO of Delta Resources Limited. As a Professional Engineer and Geologist, has 25+ years in mineral exploration. Global experience including Canada, Central and South America, as-well as Asia. Engineering degree from University of Montreal, and MSc from Queens University.



JING PING

CFO

Canadian Chartered Professional Accountant. More than 10+ years financial reporting experience for exploration companies. Former KPMG senior accountant and holds a masters degree in accounting from Rotman School of Management, University of Toronto.



ANDREW ELINESKY

Director

Current CEO of Sabre Gold Corp., former SVP & CFO of McEwen Mining and CFO of Skylight Health Group Inc. 20+ years as senior financial leader with a focus on M&A, operations, and capital markets. Has raised more than \$150M in equity and debt financing. Graduate from Oxford Brookes University, and a CPA in Ontario.



GEOMINEX

Exploration Team

Geominex is active since 1993 and are specialized in mining exploration. The consultant team includes qualified geologists, technicians and administration staff located in Rimouski, Quebec. Services include project management, drilling campaign supervision, 3D modelling, property evaluation, data compilation, claims management and mapping. They are responsible for executing Canadian Copper's exploration programs and maintaining our excellent license to operate locally.



CANADIAN COPPER

Commodities that *electrify our world.*

THANK YOU

Simon Quick
Director & CEO

simon@canadiancopper.com
905.220.6661





VMS DEPOSIT FACTS

*How does Chester compare
in size and grade globally?*

Represent 3%
of Global Copper Resources

3x Average Grade
of Porphyry Style Deposit

14% IN USA/CANADA

44% IN LATAM

CHESTER	GLOBAL
6.6 mT	3.0 mT
1.12%	0.97%

