

**COPPER EXPLORATION & DEVELOPMENT
IN THE PROLIFIC BATHURST CAMP, NEW BRUNSWICK, CANADA**

Investment Highlights

PROLIFIC PROJECT LOCATION

Among the world's top VMS districts worldwide;
+46 VMS deposits, greater than **475M tonnes**

TOP TIER MINING JURISDICTION

New Brunswick benefits from: **permitting** framework, established **infrastructure**, and extensive history of **large base metal mines**

SIGNIFICANT RESOURCE GROWTH

Murray Brook Deposit 2023 MRE

+21Mt @ 1.49% CuEq, 98% M&I Resources

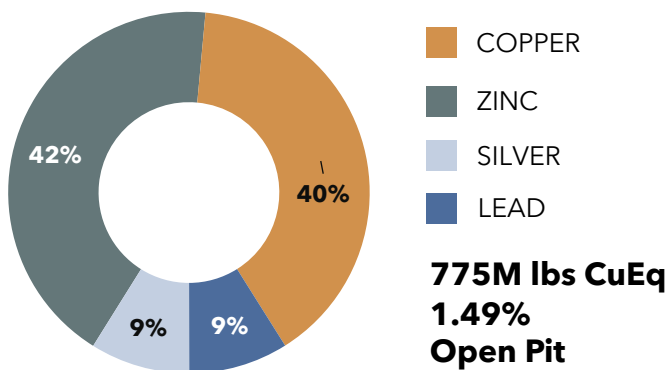
Chester Project MRE

~150M lb @ +1% CuEq (Indicated + Inferred)

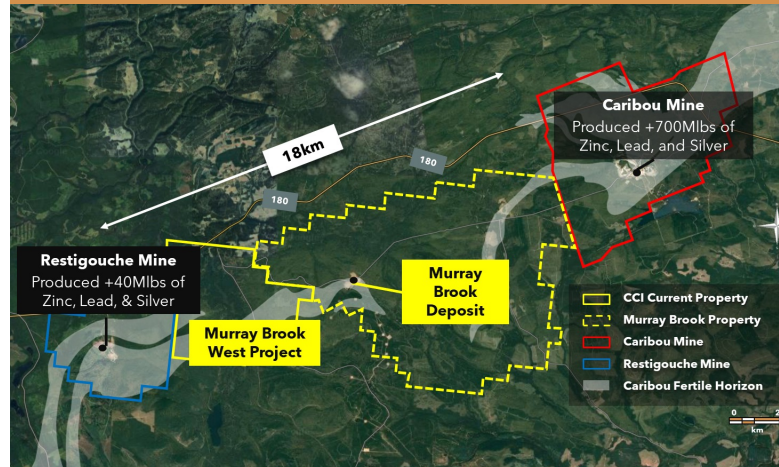
EXPLORATION UPSIDE & NEAR-TERM CATALYSTS

Permitted **3,000m drill program** for Murray Brook with 50m step-outs from previous holes (2017-2019);
New **PEA** anticipated Q1 2024

Metal Contribution



CONSOLIDATING THE CARIBOU HORIZON TREND



Project Portfolio

MURRAY BROOK DEPOSIT

- To acquire **100% ownership**;
Consolidates ownership across 18 km
- **Advanced development**;
Development plan proposal 2025
- Near **2** former mines; 10 km to mill
- **+21Mt @ 1.49% CuEq; 98% M&I Resources**

MURRAY BROOK WEST PROJECT

- **7 km strike length**;
Adjacent to Murray Brook Deposit
- Highly prospective & underexplored;
untested geophysical anomalies
- Planned prospecting and trenching

EXPANDED PORTFOLIO INCLUDES

- **Chester Project**; 150 Mlb Cu & growing
- Turgeon project, Legacy Project, Brunswick Cards Project

A Compelling Investment For Copper & Zinc



GROWING DEMAND

- **Global copper & zinc demand to double by 2050**
- Cu: 29Mt to 60Mt
(1 Mtpa growth rate)
Zn: 14Mt to 29Mt
(.5 Mtpa growth rate)
- Limited capital, environmental resistance, deeper deposits, falling ore grades



GREEN ENERGY TRANSITION

- Renewable power consumes **+4x more copper**
- 100 MWh solar power requires **240 tonnes zinc**
- **Zinc coatings** extend steel's life by **9x vs. bare steel**

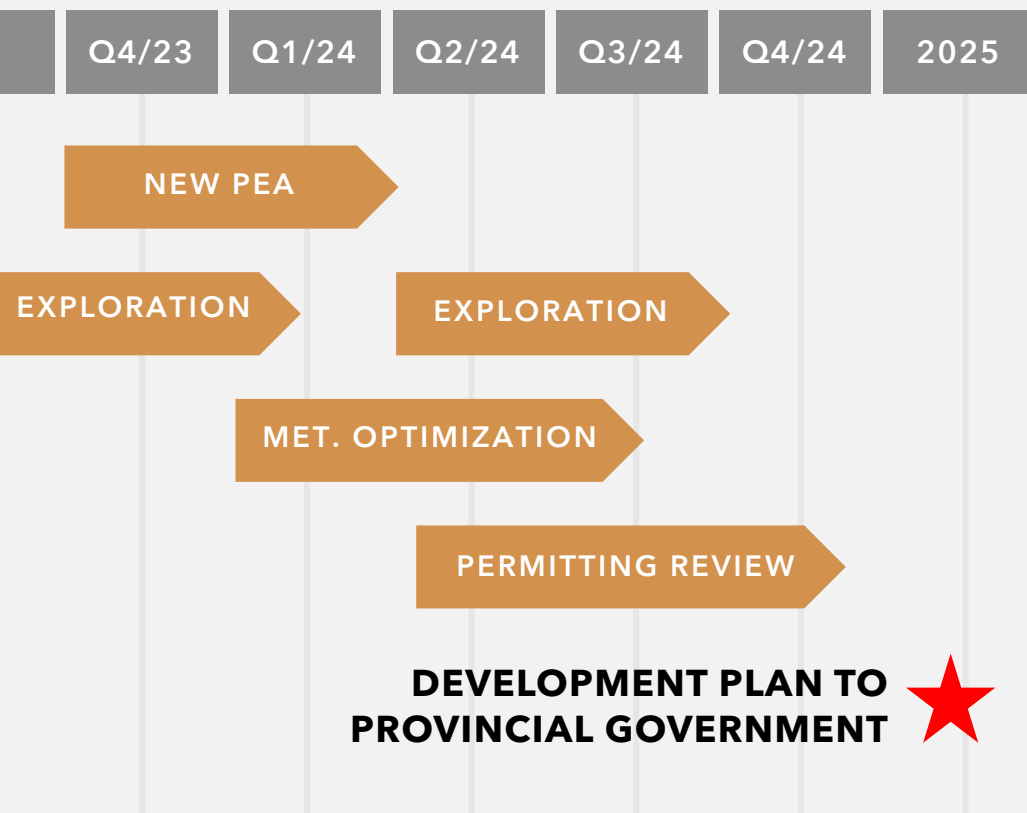


GREEN ENERGY TRANSITION

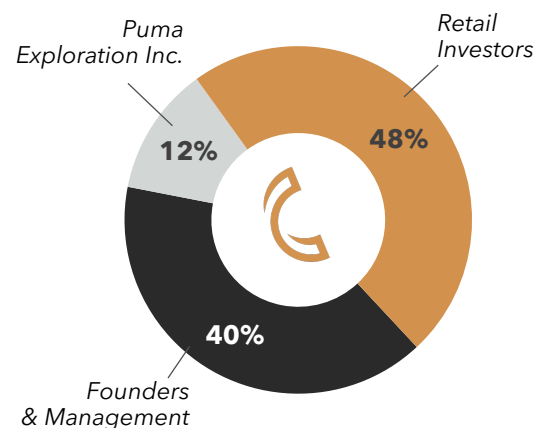
Requires significant new infrastructure:

- Copper to transmit power
- Zinc to extend life of assets
- Zinc batteries excellent, safe power storage

Project Advancement Schedule



OWNERSHIP & CAPITALIZATION



SHARES OUTSTANDING	~83.3M
WARRANTS	7.2M
OPTIONS	1.6M
FULLY DILUTED	92.1M

MARKET CAP.	~C\$7M
CASH	\$.400M
SHARE PRICE	\$0.08



SCAN TO VISIT OUR WEBSITE

MANAGEMENT & BOARD OF DIRECTORS

Simon Quick, CEO & Director
Jing Pink, CFO
GeoMinex, Exploration

Andrew Elinesky, Director
Marcel Robillard, Director
Andre Tessier, Director

CONTACT US

THE CANADIAN VENTURE BUILDING
82 RICHMOND STREET EAST
TORONTO, ON M5C 1P1