



CANADIAN COPPER

Commodities that *electrify our world.*

COPPER EXPLORATION
& DEVELOPMENT IN PROLIFIC
BATHURST CAMP

New Brunswick, Canada



Excellent Mining Jurisdiction
Large Open Pit Resource Base
Growing Copper & Zinc Resources



DISCLAIMER

Forward-Looking Information and Statements

This presentation contains "forward-looking information" for purposes of applicable Canadian securities laws. Forward-looking information includes statements that use forward-looking terminology such as "may", "could", "would", "will", "should", "intend", "target", "plan", "expect", "budget", "estimate", "forecast", "schedule", "anticipate", "believe", "continue", "potential", "view" or the negative or grammatical variation thereof or other variations thereof or comparable terminology. Such forward-looking information includes, without limitation, statements with respect to the Company's expectations, strategies and plans for the Company's: expected costs, budgets, timing and results of planned and future exploration; estimated completion dates for certain milestones and the Company's plans; future operating performance and condition of the Company and its business, operations and properties, including resource growth and portfolio expansion; and any other statement that may predict, forecast, indicate or imply future plans, intentions, levels of activity, results, performance or achievements. Although the Company bases the forward-looking information contained in this presentation upon assumptions that it believes are reasonable, the Company cautions readers that actual results and developments (including its financial performance, financial condition and liquidity, and the development of the industry in which it operates) may differ materially from those made in or suggested by the forward-looking statements contained in this presentation. Despite a careful process to prepare and review the forward-looking statements, there can be no assurance that the underlying opinions, estimates and assumptions will prove to be correct. By their nature, forward-looking information and statements related thereto involve risks and uncertainties because they relate to events and depend upon circumstances that may or may not occur in the future. The Company believes that these risks and uncertainties include, but are not limited to, those described under "Risk Factors" in the Company's prospectus dated May 24th, 2022 and other filings of the Company with the Canadian Securities Authorities, copies of which can be found under the Company's profile on the System for Electronic Document Analysis and Retrieval website at www.sedar.com. The Company undertakes no obligation to update any of the forward-looking statements in this presentation or incorporated by reference herein, except as otherwise required by law. Accordingly, the reader is cautioned not to place undue reliance on forward-looking statements.

Technical Disclosure

Technical and scientific information relating to the Murray Brook Project contained in this presentation is derived from the historical technical report titled "Technical Report and Preliminary Economic Assessment (PEA) of the Murray Brook Project, New Brunswick Canada" effective June 4, 2013. The PEA was prepared by P&E Mining Consultants Inc. under the supervision of Eugene Puritch, P. Eng., for Votorantim Metals Canada (VMC) and El Nino Ventures and filed on www.sedar.com. (the "**MB PEA 2013**"). The MB PEA 2013 is preliminary in nature and includes inferred resources that are too speculative geologically to have the economic consideration applied to them. There is no certainty that the PEA will be realized.

Mr. Eugene Puritch, P.Eng., FEC, CET, President of P&E Mining Consultants Inc. and independent Qualified Person as defined in NI 43-101, has reviewed and approved the scientific and technical content of this presentation.

The MB PEA 2013 historical resource estimate is based on prior data and reports obtained and prepared by previous operators, and information provided by governmental authorities.

- a. a qualified person has not done sufficient work to classify the historical estimate as current mineral resources or mineral reserves.
- b. the issuer is not treating the historical estimate as current mineral resources or mineral reserves.

Establishing a current mineral resource estimate on the projects of the Company will require further evaluation, which the Company and its consultants intend to complete in due course.

The Chester Project mineral resource estimates were derived from the technical report titled "*Technical Report and Initial Mineral Resource Estimate for the Chester Property, Northeast New Brunswick, Canada*" effective November 1, 2022 (the "**Chester MRE**"). The Chester MRE was prepared by APEX Geoscience Ltd. And Terrane Geoscience Inc. Under the supervision of Michael Dufresne, M.Sc., P. Geol., P. Geo, Stefan Kruse, Ph.D., P.Geo., and Anetta Banas, M.Cs., P.Geol., for Canadian Copper Inc. and filed on www.sedar.com. Mineral resources that are not mineral reserves do not have demonstrated economic viability.

This presentation does not constitute an offer to sell or buy securities

This presentation does not constitute an offer to sell or the solicitation of an offer to buy, nor shall there be any sale of the securities of the Company in any jurisdiction in which such offer, solicitation or sale would be unlawful prior to registration or qualification under the securities laws of such jurisdiction.



MANAGEMENT TEAM



SIMON QUICK | CEO & DIRECTOR

Mr. Quick has more than 13 years as a well-regarded mining leader, spanning the USA, Mexico, Argentina, and Canada. His specific experience includes early stage permitting, project development through to design engineering, construction, and final turnover. Mr. Quick joins Canadian Copper from McEwen Mining Inc. where he was Vice President of Projects. He has an honours degree in Economics from Bishop's University and an Executive MBA from the Kellogg School of Management at Northwestern University.



JING PING | CFO

Mr. Ping is a Canadian Chartered Professional Accountant. He has worked in public accounting for the past 10 years providing financial services primarily to junior exploration companies. Mr. Peng has acted as CFO and director for other Canadian reporting issuers. In addition, since December 2010, Mr. Peng has been the senior financial analyst at Marrelli Support Services, a well-respected supplier of accounting and reporting services. Mr. Peng was a senior accountant at MSCM LLP and KPMG LLP. Mr. Peng holds a master degree in Management and Professional Accounting from the Rotman School of Management, University of Toronto.



GEOMINEX | EXPLORATION TEAM

Geominex is active since 1993 and are specialized in mining exploration in all stages up to mine production. The consultant team includes geologists, technicians and administration staff located in Rimouski, Quebec. Their role includes project management, drilling campaign supervision, 3D interpretation, property evaluation, data compilation, claims management and mapping. They are responsible for executing exploration programs and maintaining our excellent license to operate locally.

BOARD OF DIRECTORS



ANDREW ELINESKY | DIRECTOR

As a finance professional, Mr. Elinesky brings over 20 years of experience as a CFO and senior financial leader for publicly traded companies in both Canada and the US. With a focus on corporate financings, M&A and integration experience, he was previously the CFO for Skylight Health Group Inc. and Reclaim Inc. Prior to that, Andrew was Senior Vice-President and CFO at McEwen Mining Inc. where he managed equity and debt financings of over \$150M and multiple acquisitions. He also has held various senior leadership and treasury roles at Heinz UK, Diageo, and Worldcom UK. Andrew graduated from Oxford Brookes University, is a CPA in Ontario, and is Treasurer for the Canadian Network for the Prevention of Elder Abuse.



MARCEL ROBILLARD | DIRECTOR

Mr. Robillard became President and CEO of Puma in 2010. He is currently a Director of PEZM Gold Inc. (PEZM-H) and reviewing potential strategic acquisition opportunities in the green energy sector. From 1998 to 2007, Marcel held the position of Project Geologist and Project Manager at Géominex, a geology and exploration consulting Company, before taking on the role of President from 2007 to 2015. Marcel has a B.Sc. in Geology and an M.Sc. in Earth Sciences from the Université du Québec à Montreal, Canada.



ANDRE TESSIER | DIRECTOR

Mr. Tessier P.Eng, P.Geo., is a Professional Engineer and Geologist, involved in the mineral exploration and mining industry since 1989, including 16 years as Director, President and CEO of publicly traded Junior companies. Mr. Tessier started his career as Exploration Manager of the Quebec exploration office for Cominco Ltd in Noranda. He subsequently became geological consultant to the industry with clients from both the major and junior sectors in Canada, South and Central America and Central Asia. Mr. Tessier obtained his Engineering degree at Ecole Polytechnique in Montreal and his MSc in Economic Geology at Queen's University in Kingston. Mr. Tessier holds professional designations with Geoscientists of Ontario, Quebec, as-well as Professional Engineers of Ontario and Quebec.

A COMPELLING INVESTMENT FOR COPPER & ZINC

INVESTING IN THE **CORNERSTONES OF CLEAN ENERGY**

GROWING DEMAND



- **Global copper & zinc demand to double by 2050**
Cu: 29Mt to 60Mt
(1 Mtpa growth rate)
Zn: 14Mt to 29Mt
(.5 Mtpa growth rate)
- Limited capital, environmental resistance, deeper deposits, falling ore grades

GREEN ENERGY TRANSITION



- Renewable power consumes **+4x more copper**
- 100 MWh solar power requires **240 tonnes zinc**
- **Zinc coatings** extend steel's life by **9x vs. bare steel**

GREEN ENERGY TRANSITION



Requires significant new infrastructure:

- Copper to transmit power
- Zinc to extend life of assets
- Zinc batteries excellent, safe power storage



OWNERSHIP, FINANCING & CAPITALIZATION

CAPITAL STRUCTURE

Share Price (C\$) \$0.08

Current S/O 90M

Average Volume 50K

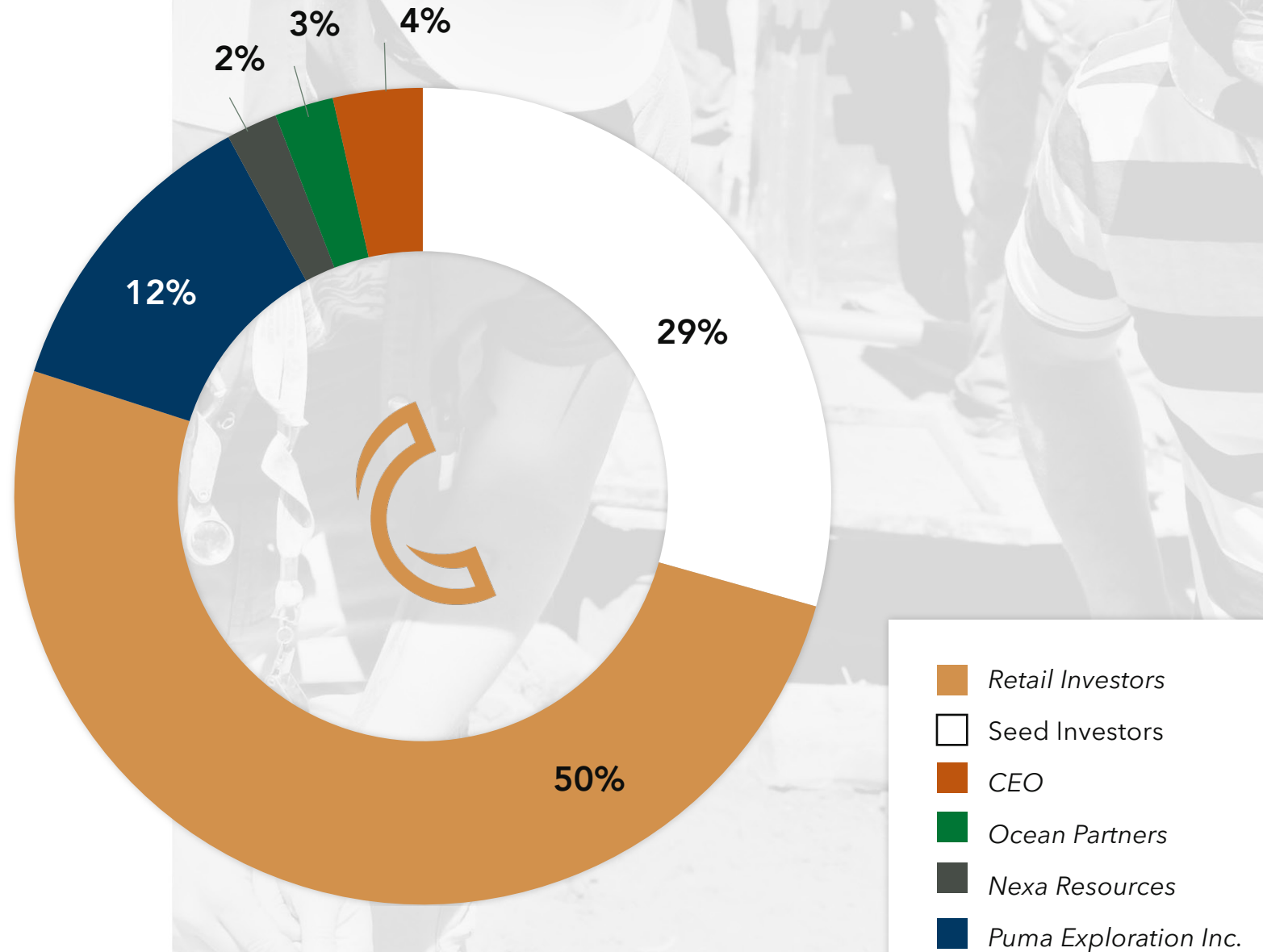
Market Cap \$7.0M

Cash \$0.300M

Warrants 9.3M

Options 1.6M

Fully Diluted 96.3M



CANADIAN COPPER HIGHLIGHTS

→ TOP TIER MINING JURISDICTION

- **Two contiguous** properties located in Bathurst Camp, New Brunswick, Canada
- **Murray Brook Deposit:** an advanced stage exploration asset with a new Mineral Resource
- Large deposit is 10 km from operational milling complex
- **Murray Brook West:** highly prospective grassroots exploration asset bordering Murray Brook deposit

→ PROLIFIC PROJECT LOCATION

- Bathurst camp is a **top 3 VMS mining districts** in the world, greater than **475M tonnes Cu-Zn-Pb**
- **Bathurst #12** mine produced 136.6Mt over 50 years.
- Extensive infrastructure; modern roads, highway networks, railways, and a **deep-water port**

→ SIGNIFICANT RESOURCE GROWTH

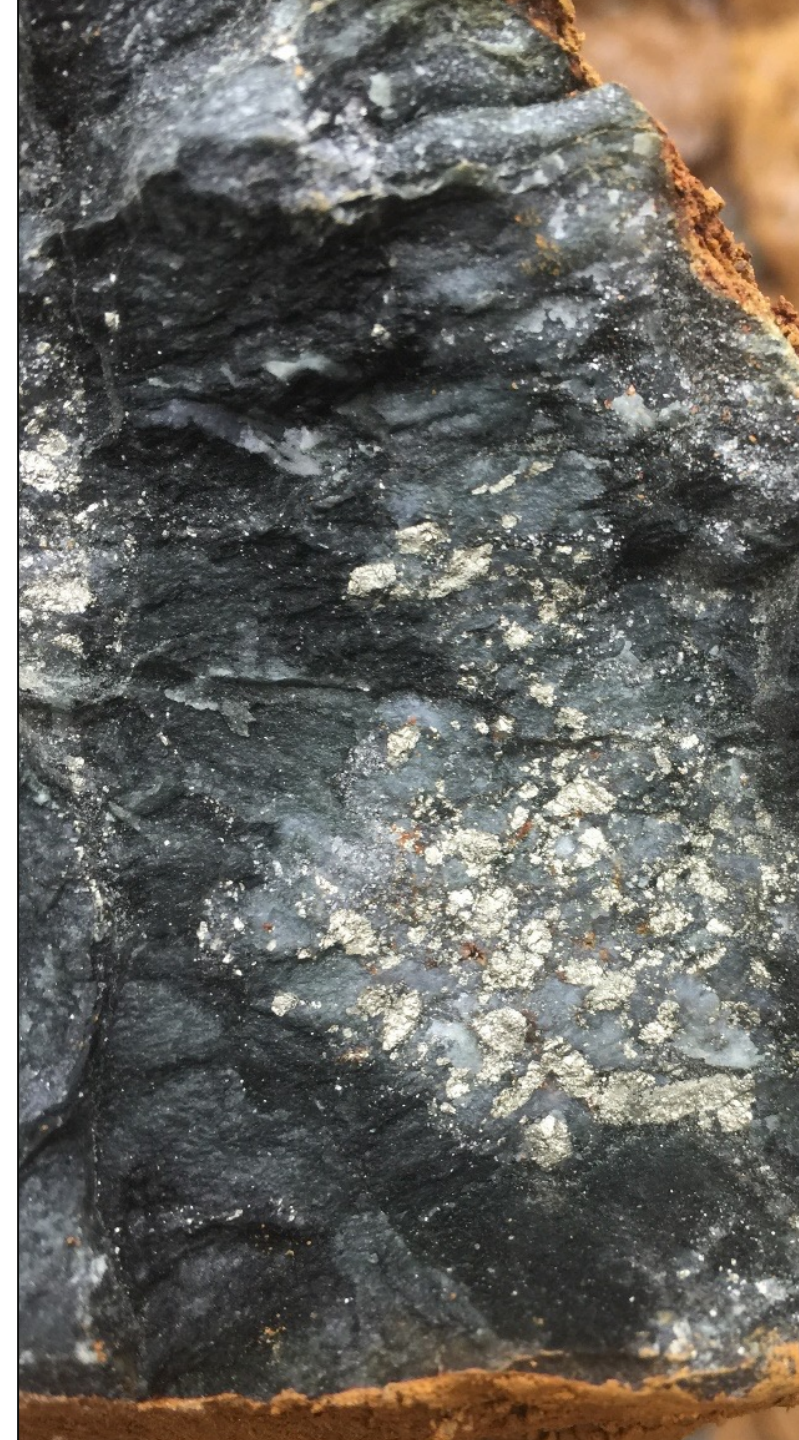
Murray Brook Deposit 2023 MRE¹: +21Mt @ 1.42% CuEq, **+\$115/tonne**, 98% M&I Resources¹

→ EXPLORATION UPSIDE

- **Murray Book Deposit** remains open to east, west, and below 350 meters
- **+8,600** hectares of highly prospective land
- 18 km strike area connecting **two former operations**

→ NEAR-TERM CATALYSTS

- **Planned** exploration at Murray Brook Deposit
- Active prospecting across **Murray Brook West**
- **Large geochemical** target at Murray Brook East
- **Active buyers** for milling complex, possible synergies



¹See NI43-101 Technical Report related to this 2023 Mineral Resource Estimate prepared by P&E Consultants

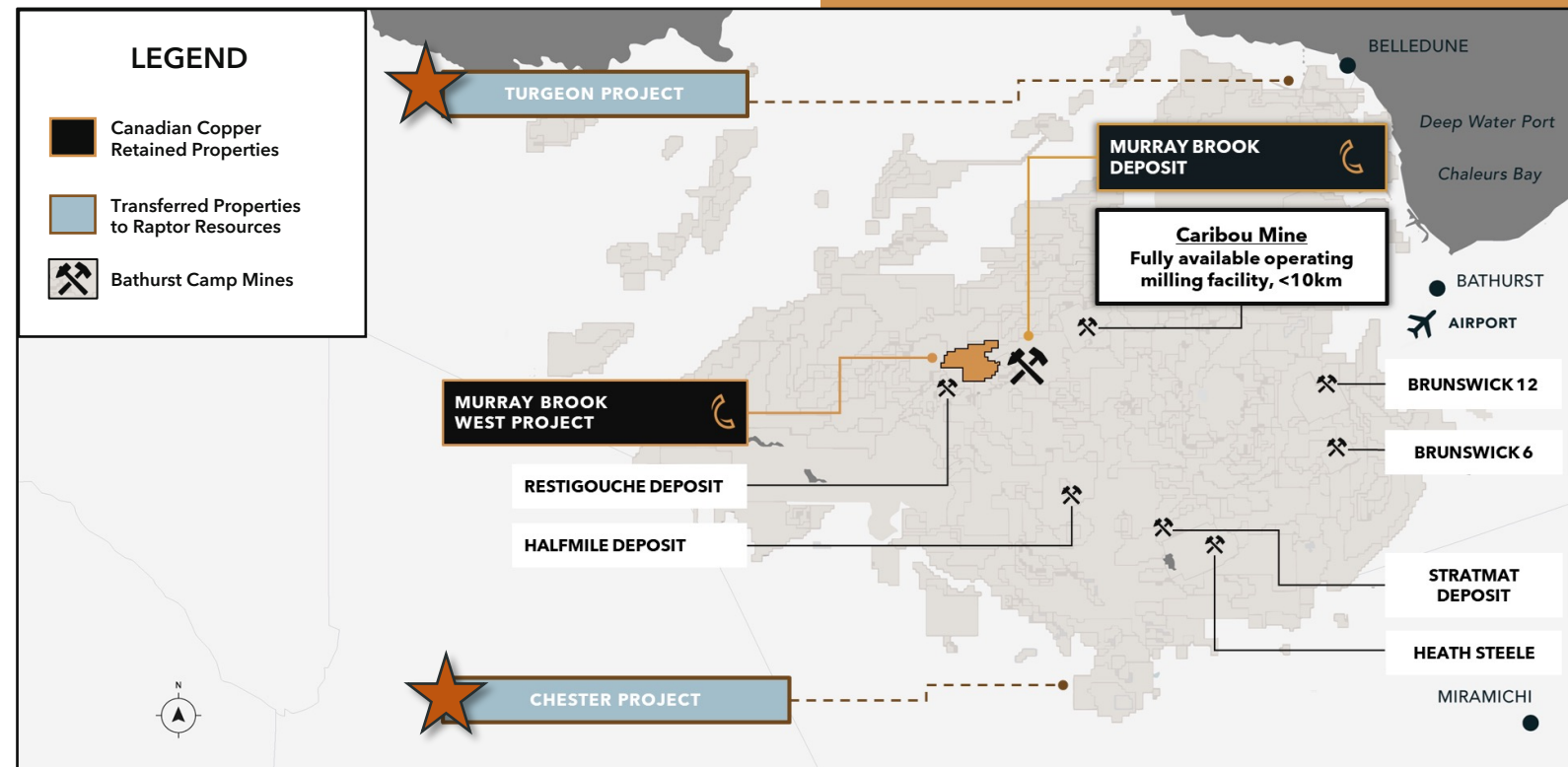
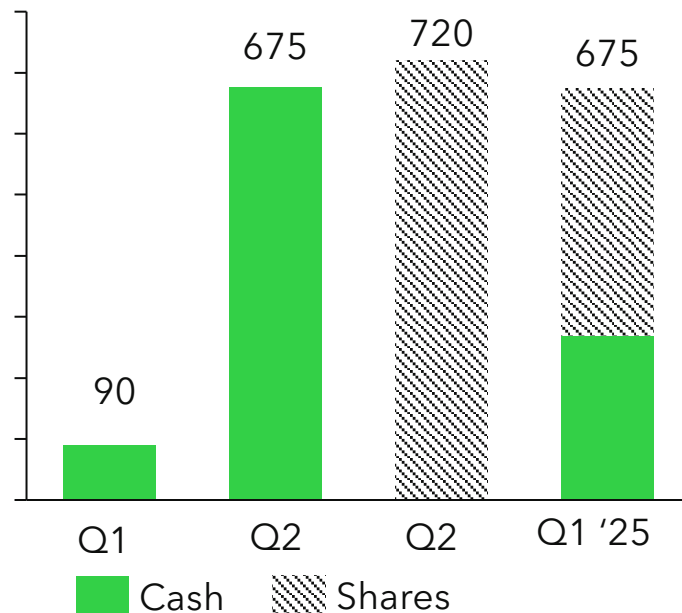
¹See October 3, 2023 and November 1, 2022 press releases and Mineral Resource Slide in Appendix for more detail.



CONDITIONAL STRATEGIC DIVESTMENT OF NON-CORE ASSETS

- Sale of Chester, Turgeon Assets for **C\$2.1** in cash and shares
- Increased focus, strategic rationale, and removes **C\$2.0** option payment

TRANSACTION SUMMARY OF CASHFLOW¹



¹ CAD Exchange Rate (AUD:CAD = 0.90)

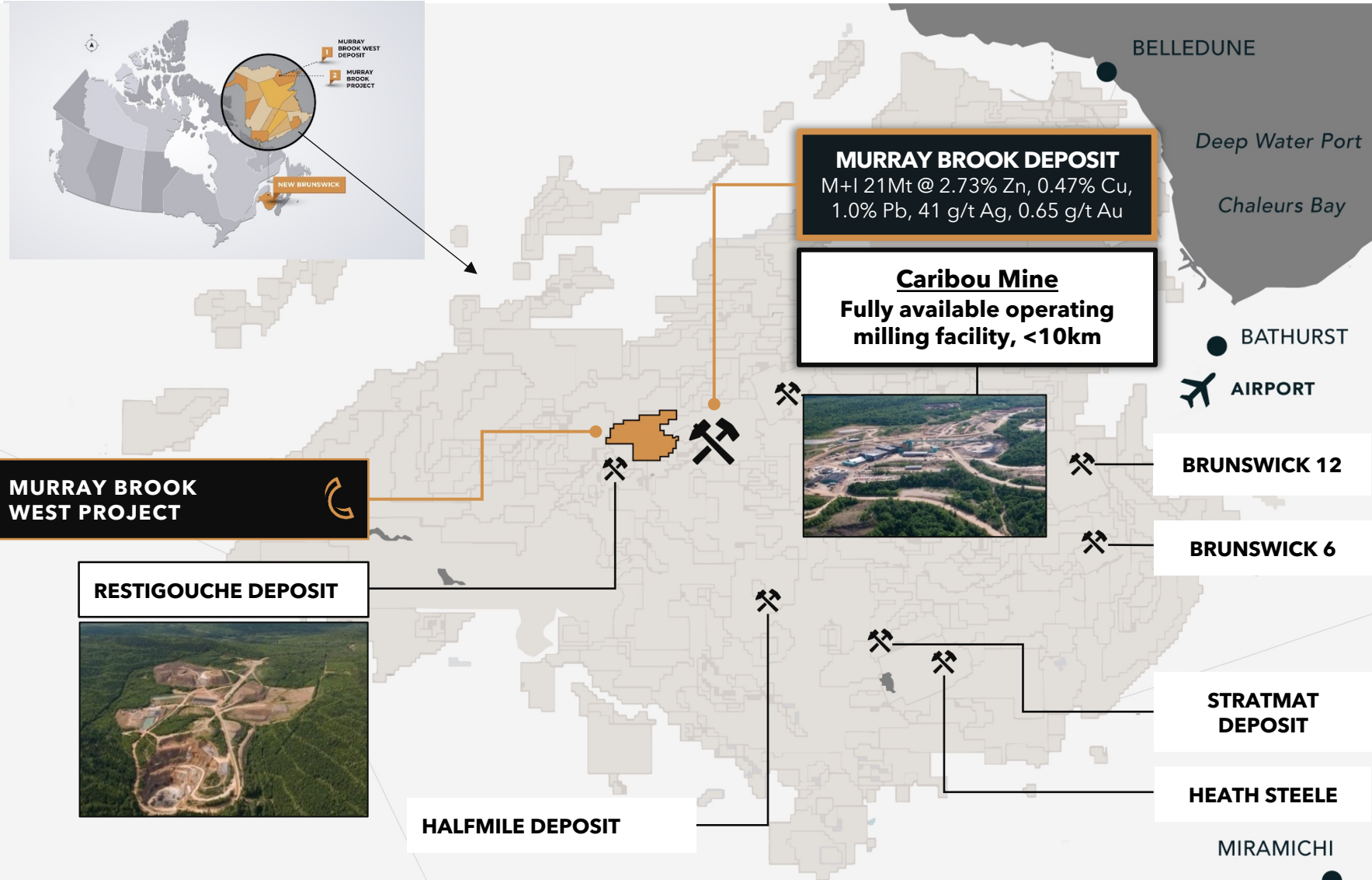
¹ See March 4, 2024, press release announcing details of the conditional transaction. Deal is subject to ASX listing and other considerations.



PORTFOLIO OF ASSETS IN THE PROLIFIC

Bathurst Mining Camp

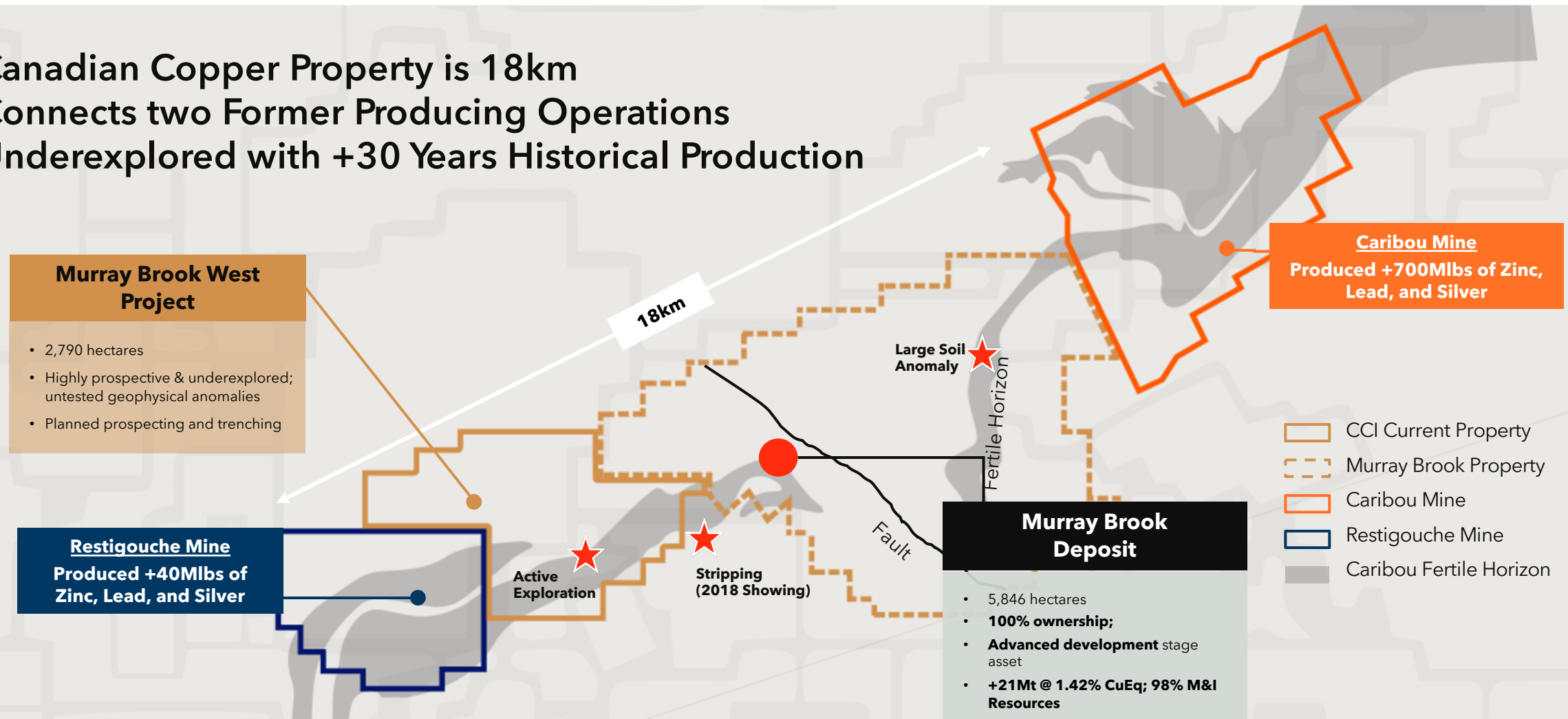
- One of Canada's oldest Mining districts
- Tier-one VMS district globally
- +46 VMS deposits hosting over 475MT
- Hosts the world renown Brunswick No.12 mine which produced 135Mt of ore over 49 yrs.





CARIBOU HORIZON TREND CONSOLIDATION

Canadian Copper Property is 18km
Connects two Former Producing Operations
Underexplored with +30 Years Historical Production





MURRAY BROOK DEPOSIT: 2023 MINERAL RESOURCE ESTIMATE

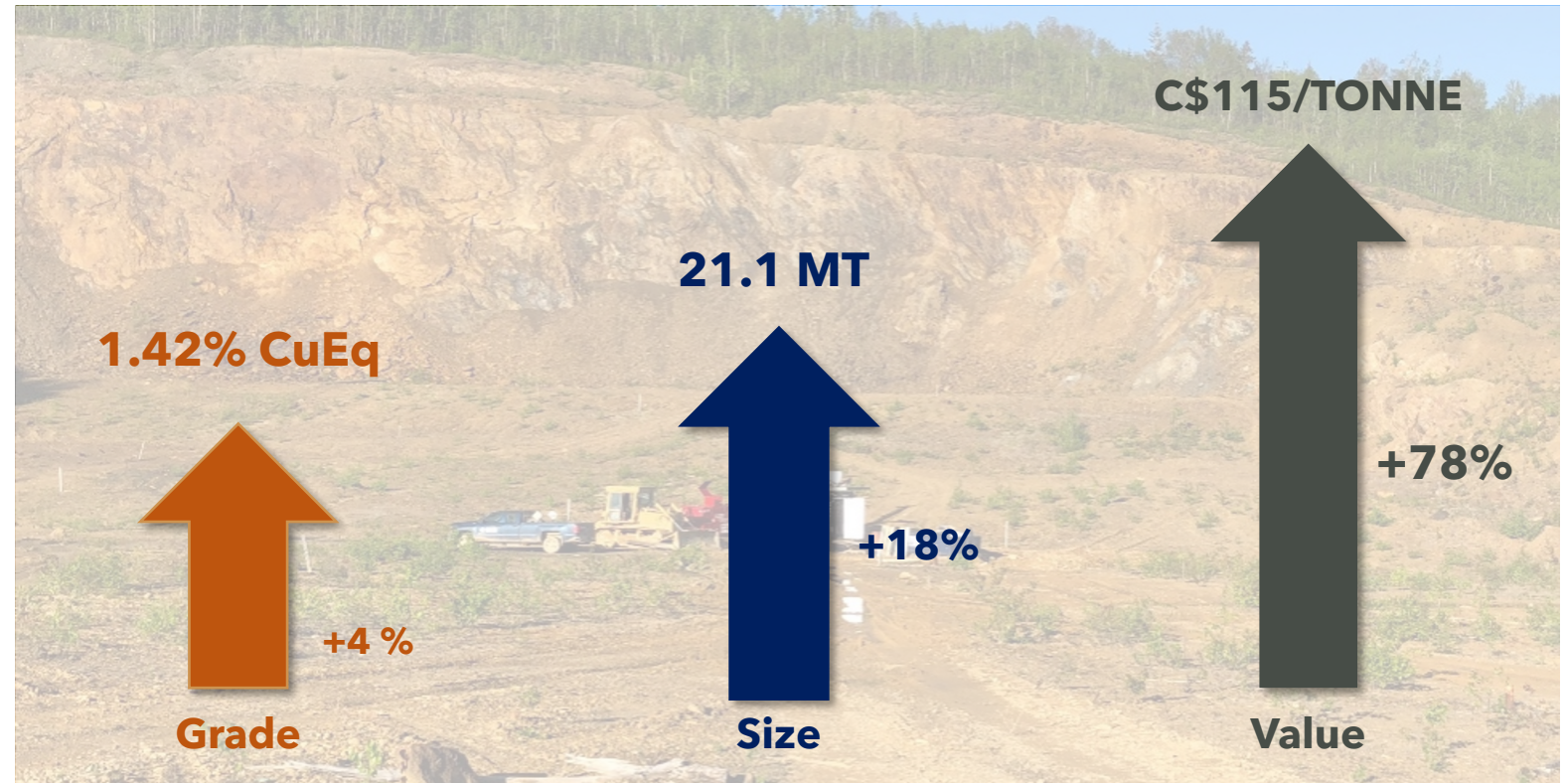
+650 Million Pounds CuEq

Measured: 15.8 Mt¹

2.60% Zn, 0.43% Cu, 0.92% Pb,
0.52 g/t Au, & 39.0 g/t Ag
(1.42% CuEq)

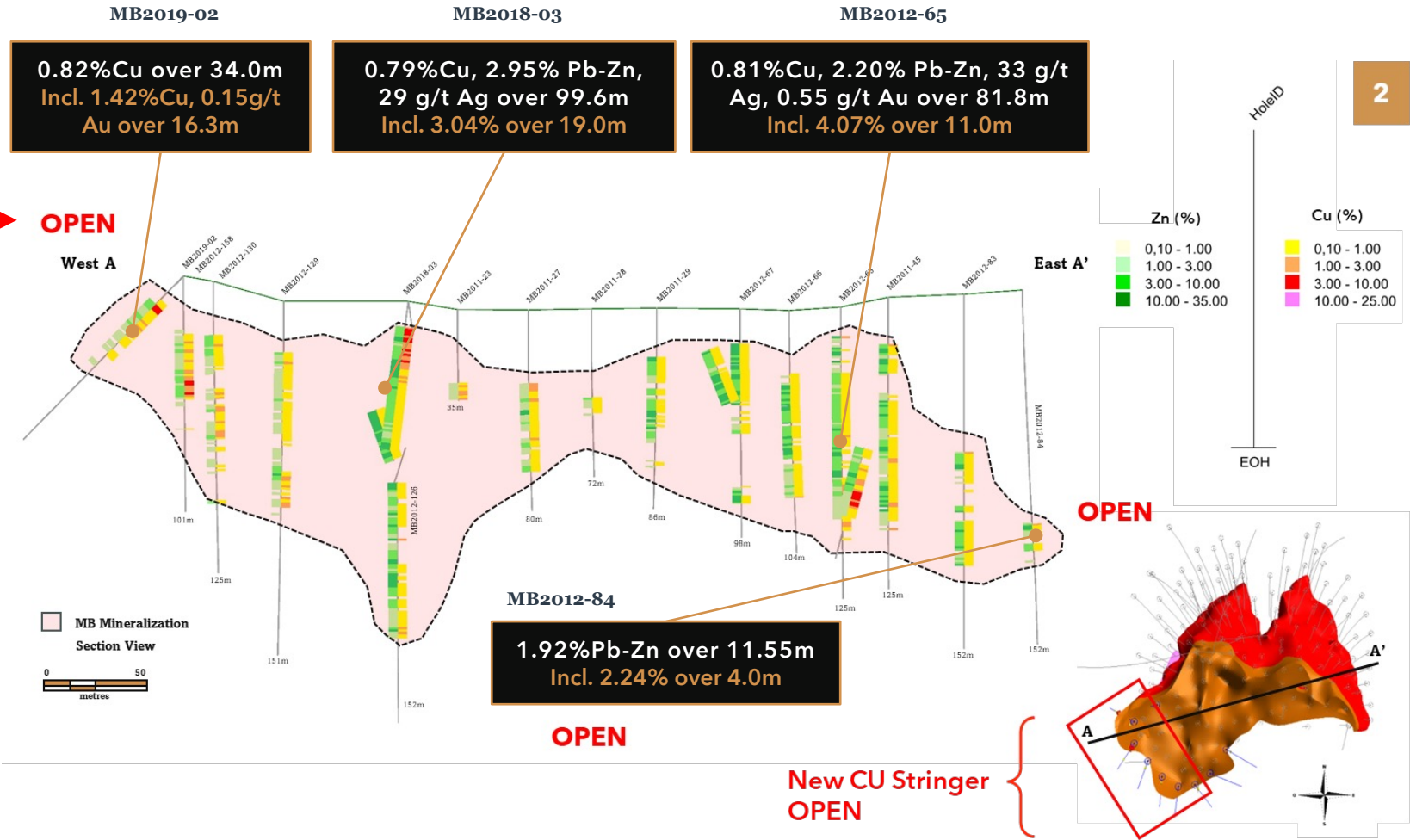
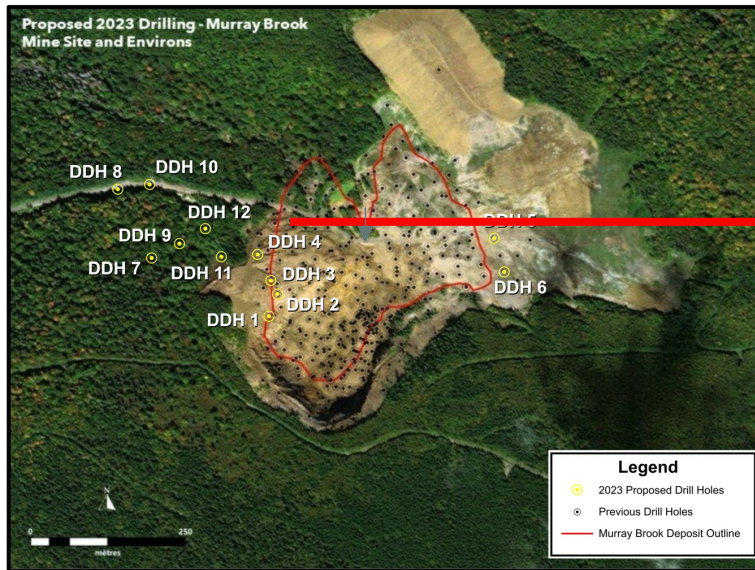
Indicated: 5.3 Mt¹

2.14% Zn, 0.52% Cu, 0.85% Pb,
0.67 g/t Au, & 37.3 g/t Ag
(1.41% CuEq)





MURRAY BROOK DEPOSIT DEFINING FURTHER EXTENSIONS



- **3000m drill program** planned testing extensions at the border of the 2023 MRE resource model and copper stinger zone (discovered 2019)¹
- Copper stinger zone extends over **180m and to 170m at depth**
- Remains open along strike and at depth
- adjacent to the massive sulphide mineralization and corresponds to **a strong Megateme anomaly at depth**

¹See press release titled: "Puma Exploration And Trevali Mining Corporation Drill 1.17 G/T Au, 0.50% Cu And 4.16% Zn + Pb Over 153.2 Meters At The Copper-gold Rich Zone Of The Murray Brook Deposit" disseminated on Globalnewswire by Puma Exploration Inc. on January 21, 2018.



STATUS OF CARIBOU CCAA PROCESS: **THREE** INTERESTED PARTIES IN RESTART



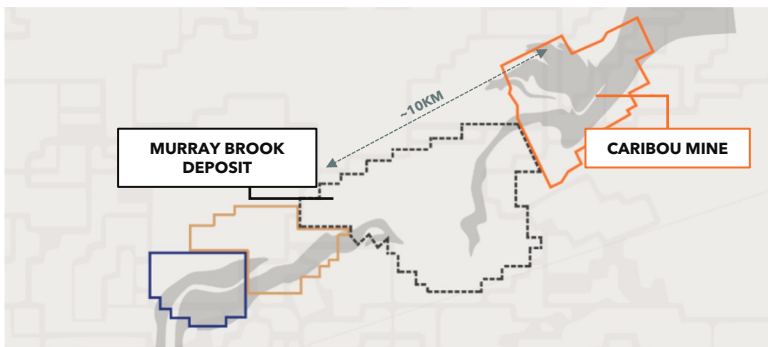
Caribou Mine
MRE: 7.2Mt M+I, & I, ~7 Yr. LOM



**Canadian Copper's
Murray Brook Deposit**
MRE: 21 Mt M+I, +13 Years Feed



**Asset with extended
mine life to + 20 years**



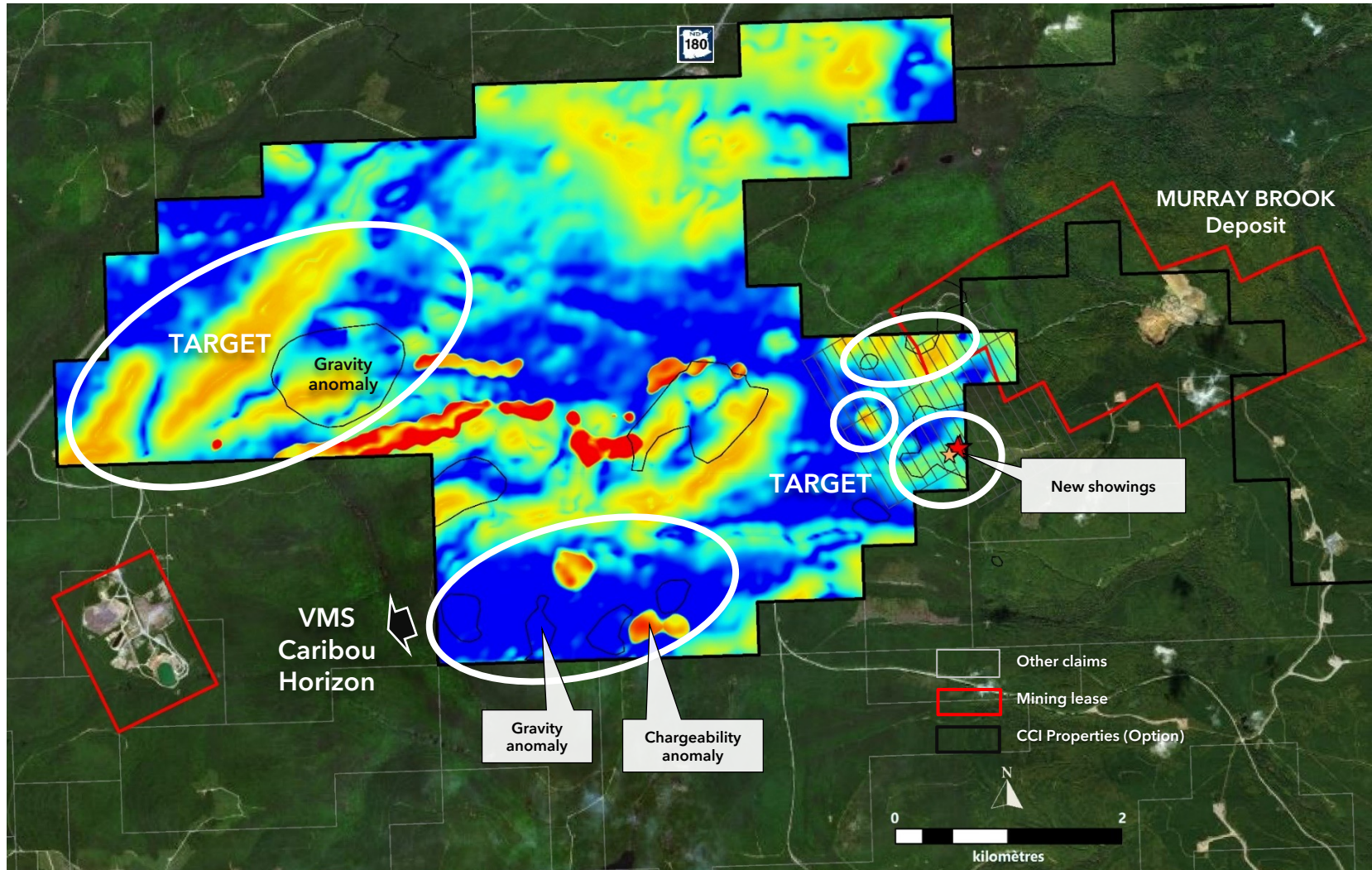
Update as of October 18th, 2023¹

"e. prior to the offer deadline, the Receiver received four offers from auctioneers and three expressions of interest from parties wishing to pursue an acquisition of the Caribou mine with a goal of restarting operations.

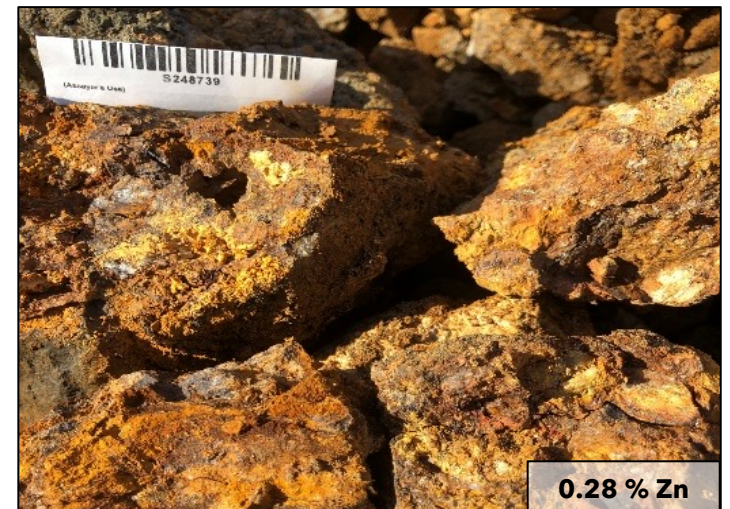
16. Given the interest from parties seeking to restart the Caribou mine, the Receiver delayed advancing an offer with an auctioneer to allow parties interested in restarting the Caribou mine an opportunity to engage with DNRED regarding issues related to the continued operation of the Caribou mine."



MURRAY BROOK WEST PROGRAM





2018 New Showing





COMPELLING VALUE PROPOSITION: EV VS. IN-SITU



	 CANADIAN COPPER	 EMERITA	Adriatic Metals	F O R A N
Enterprise Value¹	C\$8.5M	C\$96M	C\$1,023M	C\$992M
In-Situ Value²	C\$3.89B	C\$6.08B	C\$11.8B	C\$14.5B
Open Pit /Underground	Open Pit	UG	UG	UG
EV to In-Situ	0.2182 %	1.58%	8.67%	6.84%
Project Name	MB	IBW	Rupice	Mcllvenna
Stage	MRE	MRE	Commissioning	Feasibility
ZnEq Pounds	2,114M	3,327M	6,477M	7,960M
Market Cap	C\$8.5M	C\$110M	C\$940M	C\$1,060M
ZnEq Grade (%)	4.77%	8.04%	13.92%	8.19%
Resource Estimate	21.105 Mt	18.8 Mt	21.1 Mt	44.1 Mt

¹Enterprise Value (in \$CAD millions)

²In-Situ Valuation (Resource Only; Post-Recovery)



CANADIAN COPPER

Commodities that *electrify our world.*

THANK YOU

Simon Quick *Chief Executive Officer*

simon@canadiancopper.com

905.220.6661





APPENDIX A: 2023 MINERAL RESOURCE¹

TABLE 1.1
MURRAY BROOK IN-PIT MINERAL RESOURCE ESTIMATE AT CDS\$23/T NSR CUT-OFF^(1 TO 9)

Zone	Classification	Tonnes (k)	Cu (%)	Cu (Mlb)	Pb (%)	Pb (Mlb)	Zn (%)	Zn (Mlb)	Au (g/t)	Au (koz)	Ag (g/t)	Ag (Moz)	ZnEq (%)	CuEq (%)	NSR (CAD \$/t)
Oxide	Measured	1,641	1.05	37.9	0.73	26.6	2.20	79.6	0.36	19	38.0	2.0	5.94	1.85	156
	Indicated	373	0.97	7.9	0.78	6.4	2.31	19.0	0.51	6	44.7	0.5	6.02	1.88	158
	Measured + Indicated	2,014	1.03	45.9	0.74	32.9	2.22	98.6	0.39	25	39.2	2.5	5.95	1.86	157
Sulphide	Measured	15,830	0.43	150.8	0.92	322.2	2.60	908.3	0.52	264	39.0	19.8	4.83	1.51	115
	Indicated	5,275	0.52	60.9	0.85	98.9	2.14	248.9	0.67	114	37.3	6.3	4.58	1.43	114
	Measured + Indicated	21,105	0.45	211.7	0.91	421.1	2.49	1,157.2	0.56	378	38.6	26.2	4.77	1.49	115
	Inferred	110	0.41	1.0	0.68	1.6	1.82	4.4	0.62	2	30.4	0.1	3.75	1.17	92

¹ US metal prices \$4.00/lb Cu, \$1.25/lb Zn, \$0.95/lb Pb, and \$23/oz Ag at \$0.76 USD/CAD.

¹ Process recoveries used were 80% Cu, 87% Zn, 75% Pb, and 90% Ag.