



# CANADIAN COPPER

Commodities that *electrify our world.*

## STRATEGIC TRANSACTION TO ACQUIRE CARIBOU COMPLEX

*POSITIONING FOR COPPER AND ZINC PRODUCTION  
IN BATHURST, NEW BRUNSWICK, CANADA*



# DISCLAIMER

## Forward-Looking Information and Statements

This presentation contains "forward-looking information" for purposes of applicable Canadian securities laws. Forward-looking information includes statements that use forward-looking terminology such as "may", "could", "would", "will", "should", "intend", "target", "plan", "expect", "budget", "estimate", "forecast", "schedule", "anticipate", "believe", "continue", "potential", "view" or the negative or grammatical variation thereof or other variations thereof or comparable terminology. Such forward-looking information includes, without limitation, statements with respect to the Company's expectations, strategies and plans for the Company's: expected costs, budgets, timing and results of planned and future exploration; estimated completion dates for certain milestones and the Company's plans; future operating performance and condition of the Company and its business, operations and properties, including resource growth and portfolio expansion; and any other statement that may predict, forecast, indicate or imply future plans, intentions, levels of activity, results, performance or achievements. Although the Company bases the forward-looking information contained in this presentation upon assumptions that it believes are reasonable, the Company cautions readers that actual results and developments (including its financial performance, financial condition and liquidity, and the development of the industry in which it operates) may differ materially from those made in or suggested by the forward-looking statements contained in this presentation. Despite a careful process to prepare and review the forward-looking statements, there can be no assurance that the underlying opinions, estimates and assumptions will prove to be correct. By their nature, forward-looking information and statements related thereto involve risks and uncertainties because they relate to events and depend upon circumstances that may or may not occur in the future. The Company believes that these risks and uncertainties include, but are not limited to, those described under "Risk Factors" in the Company's annual management discussion and analysis for the year ended October 31, 2023 and other filings of the Company with the Canadian Securities Authorities, copies of which can be found under the Company's profile on the SEDAR+ website at [www.sedarplus.ca](http://www.sedarplus.ca). The Company undertakes no obligation to update any of the forward-looking statements in this presentation or incorporated by reference herein, except as otherwise required by law. Accordingly, the reader is cautioned not to place undue reliance on forward-looking statements.

## Technical Disclosure

Technical and scientific information relating to the Murray Brook Project contained in this presentation is derived from the technical report titled "Technical Report and Updated Mineral Resource Estimate of the Murray Brook ZN-PB-CU-AG Project New Brunswick Canada" (effective October 3, 2023) prepared by P&E Mining Consultants Inc, and filed on [www.sedarplus.ca](http://www.sedarplus.ca) (the "**MB Technical Report 2023**"). The MB Technical Report 2023 is preliminary in nature and includes inferred resources that are too speculative geologically to have the economic consideration applied to them. There is no certainty that the MB Technical Report 2023 will be realized.

The Caribou Mine historical mineral resource estimates were derived from the technical report titled "Technical Report on the Caribou Mine, Bathurst, New Brunswick, Canada" dated May 31, 2018, effective December 31, 2017, (the "**Caribou Technical Report**"). The Caribou Technical Report was prepared by prepared by Roscoe Postle Associates Inc, under the supervision of Torben Jensen, Ian T. Blakley, Tracey Jacquemin and Shaun C. Woods for Trevali Mining Corporation and filed on [www.sedarplus.ca](http://www.sedarplus.ca). Mineral resources that are not mineral reserves do not have demonstrated economic viability.

The Caribou Technical Report historical resource estimate is based on prior data and reports obtained and prepared by previous operators, and information provided by governmental authorities.

- a. a qualified person has not done sufficient work to classify the historical estimate as current mineral resources or mineral reserves.
- b. the issuer is not treating the historical estimate as current mineral resources or mineral reserves.

Until mineral deposits are actually mined and processed, Mineral Resources must be considered as estimates only. Mineral Resource Estimates that are not Mineral Reserves have not demonstrated economic viability.

Establishing a current mineral resource estimate on the projects of the Company will require further evaluation, which the Company and its consultants intend to complete in due course.

Mr. Eugene Puritch, P.Eng., FEC, CET, President of P&E Mining Consultants Inc. and independent Qualified Person as defined in NI 43-101, has reviewed and approved the scientific and technical content of this presentation.

## This presentation does not constitute an offer to sell or buy securities

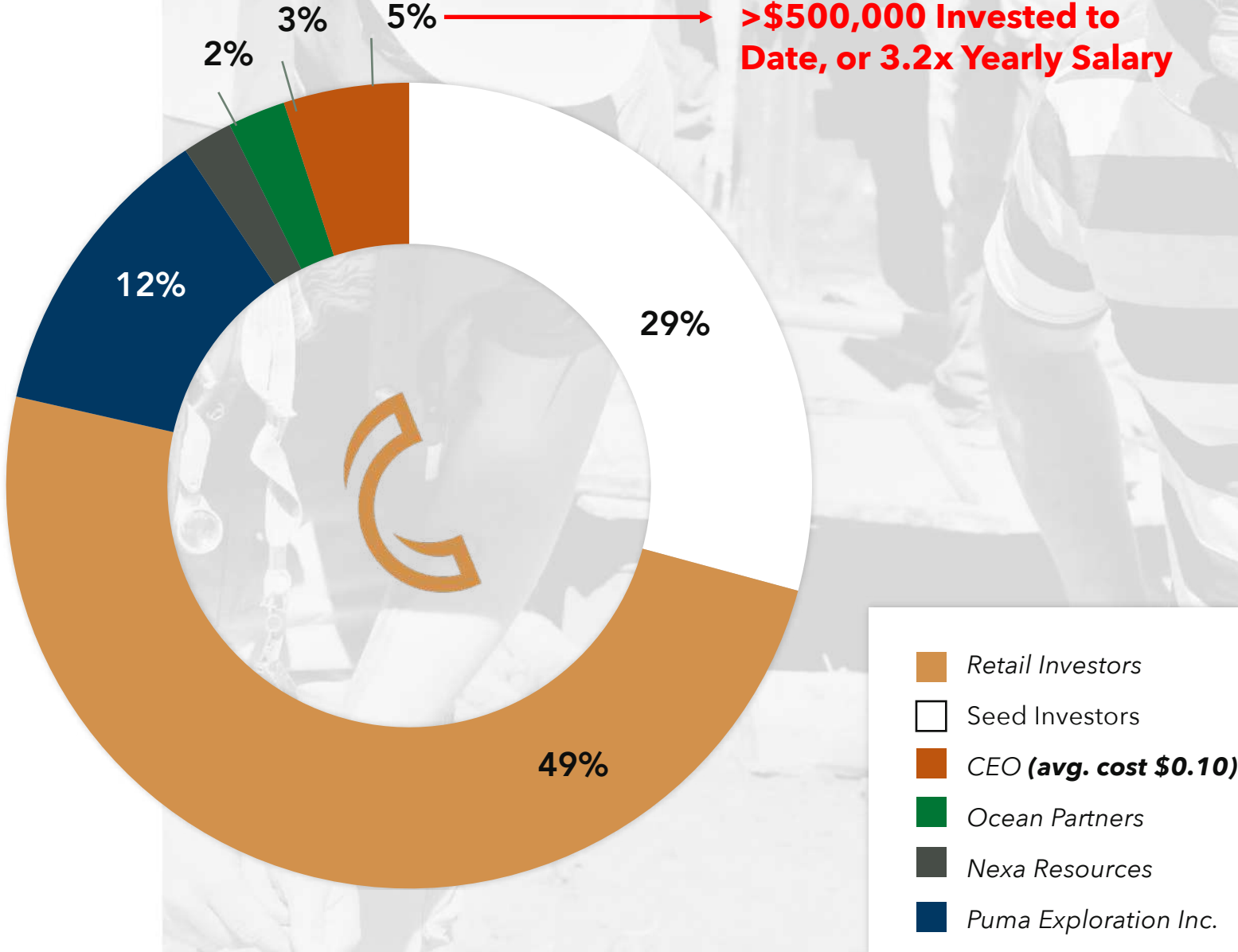
This presentation does not constitute an offer to sell or the solicitation of an offer to buy, nor shall there be any sale of the securities of the Company in any jurisdiction in which such offer, solicitation or sale would be unlawful prior to registration or qualification under the securities laws of such jurisdiction.

# OWNERSHIP, FINANCING & CAPITALIZATION

## CAPITAL STRUCTURE

Share Price (C\$)	\$0.18
Current S/O	102M
Average Volume	150K
Market Cap	\$18M
Cash	\$1.4M
Warrants	21.1M <sup>1</sup>
Options	1.6M
Diluted with Options	104M

<sup>1</sup> 4.5M warrants expire July 31<sup>st</sup>, 2025.





# OVERCOMING ROADBLOCKS OF JUNIOR MINING



### HIGH CAPITAL COSTS

Junior faced with financing large developments relative to market cap size



### LONG TIMELINES

Permitting & infrastructure requirements can take years or decades



### MARKET VOLATILITY

Financing is tied to balance sheet size, making project execution challenging, magnified by long-time horizons



### EXECUTION COMPLEXITY

Projects are remote, requiring challenging/bespoke infrastructure needs



## HOW CANADIAN COPPER IMPROVES ITS RISK PROFILE FOR DEVELOPMENT



**Capital Cost to Market Cap Ratio**  
**<5X** - Capital efficient development



**Permitting Advantage in New Brunswick**  
Provincial jurisdiction speeds up approvals vs. federal permitting bottlenecks



**Reduced Scope of Construction**  
Existing infrastructure; Permitted 3,000 tpd Caribou Complex with grid power, tailings, and roads already in place.



# COMBINED STRATEGY

**PROVEN LARGE DEPOSIT** + **EXISTING PROCESS FACILITY**

**MURRAY BROOK DEPOSIT**

**CARIBOU PLANT COMPLEX**

Highway 180

~ 10 km

- 100% ownership;
- Advanced development
- +21Mt @ 1.42% CuEq;
- 98% M&I Resources

- Permitted mine and milling complex;
- Name plate processing capacity is 3,000 tpd;



# WHAT IS THE COMBINED STRATEGY WORTH?

## MURRAY BROOK PROJECT PEA RESULTS IN 2013\*

**\$96M NPV**



**Multiple\***

**Implied  
Marketcap  
@\$96M NPV**



**\$NPV?**

### Capex Considered:

<b>Process Plant:</b>	<b>\$104M</b>
<b>Mining Fleet:</b>	<b>\$33M</b>
<b>Infrastructure:</b>	<b>\$35M</b>
<b>Reclamation:</b>	<b>\$60M</b>

<b>Low (.15x):</b>	<b>\$14M</b>
<b>Average (.75x):</b>	<b>\$72M</b>
<b>High (1.22x):</b>	<b>\$117M</b>

### New PEA, Different Plan:

<b>Process Plant:</b>	<b>\$6.2M + rehab</b>
<b>Mining Fleet:</b>	<b>Contract Mining</b>
<b>Infrastructure:</b>	<b>Less</b>
<b>Reclamation:</b>	<b>Equal to or less</b>

**Sub Total = \$232M**

**Sub Total = \$?M**

\*June 13, 2023 Press Release: <https://www.newswire.ca/news-releases/positive-preliminary-economic-assessment-for-murray-brook-zn-cu-pb-ag-deposit-bathurst-mining-camp-new-brunswick-512525181.html>

\* Base metal developers P/NAV from Scotia Mining Metals and Mining Research



# CARIBOU MILL IS STRATEGIC ASSET

---

**Fully permitted**  
**3,000 tonnes per day**  
mill, TSF, mine site  
infrastructure

**Asset Value**  
**+200 million**  
**replacement**  
reduced timeline to  
production

**Risk Adjust Development**  
**Combined Asset Strategy**  
Streamlined approach  
reduces timelines and risks

---

## ENERGY TRANSITION DEMAND

**Essential Critical Metals for  
electrification**

Positioned to support growing  
demand for Cu & Zn

## ECONOMIC EFFICIENCY

**Improved Capital Intensity**

Faster development & shorter  
tracked permitting

## TOP-TIER MINING JURISDICTION

**Bathurst Mining Camp, New  
Brunswick**

World-class VMS district with  
established infrastructure



# HIGHLIGHTS

## COMBINING ASSETS TO CREATE NEAR-TERM BASE METAL PRODUCER

---

**MURRAY BROOK DEPOSIT:** 100% owned, large open pit VMS mineral resource. 98% M&I category, 21Mt @ 1.49% CuEq, +\$115/tonne NSR value. Preliminary metallurgical test work, mine design, and site layout completed in 2019

---

**CARIBOU COMPLEX :** Fully permitted process plant located 10 km east of Murray Brook. The constructed milling and flotation infrastructure on-site is capable of processing 3,000 tpd. Last production was Q2, 2022 totaled 15M lbs zinc

---

**COMBINED OPERATION & COMPLIMENTARY NEEDS:** Creates strong synergies. A process plant requiring feed, and a large deposit that requires a milling and flotation facility to produce copper, zinc, silver and lead in concentrate

---

**IMPROVED RISK PROFILE:** A constructed facility is more capital efficient and reduces permitting complexity. Objective is to bring Murray Brook open pit deposit online to feed 3,000 tpd circuit in entirety

---

**STAKEHOLDER ALIGNMENT:** Direct capital injection and immediate job creation into New Brunswick. A province with no currently active base metal mines. Also repurposes a facility currently on Care & Maintenance





# TRANSACTION OVERVIEW

---

## **ASSETS UNDER PURCHASE AGREEMENT**

- Operational 3,000 tpd sulphide processing complex connected to grid power and water supply
  - Caribou Complex includes one SAG mill, two ball mills, three ISA grinding circuits, load out facilities, and flotation equipment
  - Permitted tailings impoundment and laboratory facilities
- 

## **CONDITIONS AND TIMING**

- \$6,225,000 purchase price
  - Close date is July 11<sup>th</sup>, 2025
- 

## **NEXT STEPS**

- Complete updated metallurgical testwork, Q1 2025
- Complete financial modeling for updated PEA, H1, 2025
- Finalize financing structure to close acquisition by July 2025



# CARIBOU COMPLEX OVERVIEW



## ➔ PROCESSING FACILITY

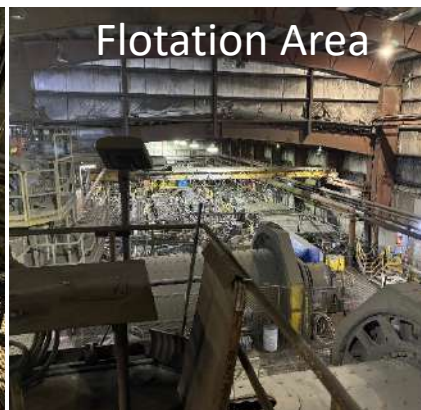
- Capacity: 3,000 tpd sulphide processing
- Includes one SAG mill, two ball mills, and three ISA grinding circuits
- On-site laboratory facilities for real-time metallurgical testing and process optimization

## ➔ INFRASTRUCTURE & PERMITTING

- Permitted tailings impoundment
- Existing Infrastructure: capable of critical metal production, supported by established milling and flotation facilities



ISAMills



Flotation Area



Ball Mills

## ➔ PRODUCTION OPPORTUNITY

- Production of critical metal concentrates, including copper, zinc, silver, and lead production

## ➔ UPCOMING MILESTONES

- **Q1, 2025:** Completion of updated metallurgical testwork & verify internal financial modeling
- H1, 2025: Issue PEA of Combined Strategy
- **H1, 2025:** Engage financing partners and close the acquisition



# MURRAY BROOK IS KEY TO CARIBOU

## PREVIOUS OPERATION



Ore availability, UG instability, ore delineation challenges, catastrophic mine flood in Africa

Geographical footprint: 2 continents, 4 countries

Limited development capital for UG ore body

## CANADIAN COPPER'S OPPORTUNITY



**MURRAY BROOK DEPOSIT - Only 10km away**

- Open pit resource with consistent mill feed tonnage
- Large resource base with + 16-year visibility on production budget

- One mine
- One jurisdiction
- Focused on one development and mine operation

- No longer faced with underground capital development pressure
- Capital will be deployed at mill site only



# MOU WITH PABINEAU FIRST NATION



**October 8<sup>th</sup>, 2024:** Canadian Copper signed a non-binding Memorandum of Understanding with Pabineau First Nation



The MOU aims to foster open communication and collaboration on mineral development opportunities in New Brunswick



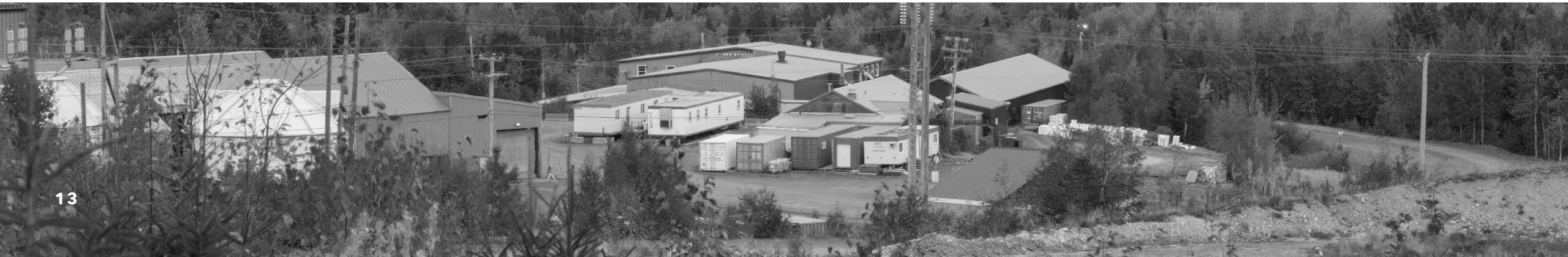
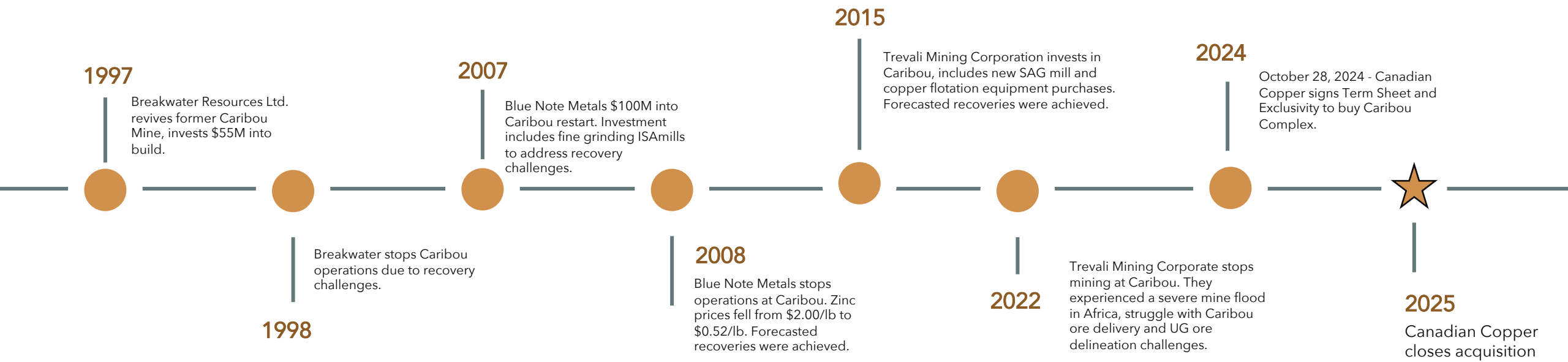
Creates mutual benefits, including job creation, contracting opportunities, and potential business partnerships for Pabineau First Nation



Pabineau First Nation provides local land knowledge and strong networks, & we are committed to ensuring Pabineau First Nation benefits economically from future development



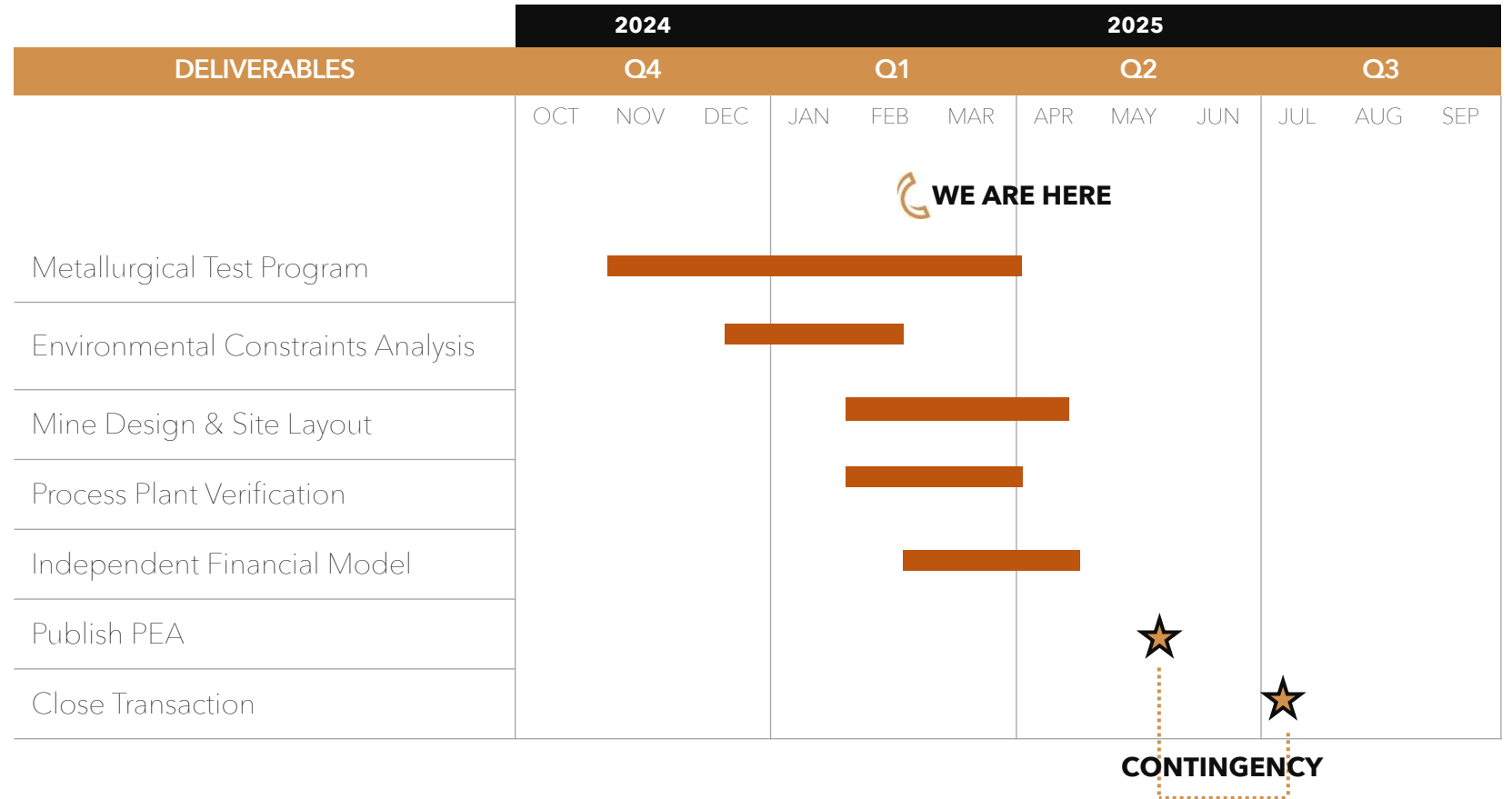
# CARIBOU MINE HISTORY: 1998 - 2024



# ACTIVITY SUMMARY



## NEXT STEPS FOR CARIBOU ACQUISITION





## MANAGEMENT TEAM



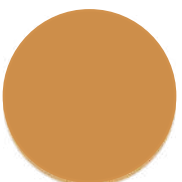
### **SIMON QUICK | CEO & DIRECTOR**

Mr. Quick has more than 14 years as a well-regarded mining leader, spanning the USA, Mexico, Argentina, and Canada. His specific experience includes early stage permitting, project development through to design engineering, construction, and final turnover. Mr. Quick joins Canadian Copper from McEwen Mining Inc. where he was Vice President of Projects. He has an honours degree in Economics from Bishop's University and an Executive MBA from the Kellogg School of Management at Northwestern University.



### **JING PING | CFO**

Mr. Ping is a Canadian Chartered Professional Accountant. He has worked in public accounting for the past 10 years providing financial services primarily to junior exploration companies. Mr. Ping has acted as CFO and director for other Canadian reporting issuers. In addition, since December 2010, Mr. Ping has been the senior financial analyst at Marrelli Support Services, a well-respected supplier of accounting and reporting services. Mr. Ping was a senior accountant at MSCM LLP and KPMG LLP. Mr. Ping holds a master degree in Management and Professional Accounting from the Rotman School of Management, University of Toronto.



### **BRENT OMLAND | DIRECTOR**

Mr. Omland brings 20 years of experience in mining, metals, and trading, with a strong focus on finance and executive leadership. As CEO of Ocean Partners Holdings Limited, he has been integral to the company's success as Chief Financial Officer and Director since 2013. Prior to joining Ocean Partners, he served as CFO for Ivernia Inc. and Enirgi Metals Group, leading finance functions for lead mining and smelting operations in Australia. Mr. Omland began his career with finance roles at Teck Cominco. A Canadian Chartered Accountant and graduate of the University of British Columbia.

## BOARD OF DIRECTORS



### **ANDREW ELINESKY | DIRECTOR**

As a finance professional, Mr. Elinesky brings over 20 years of experience as a CFO and senior financial leader for publicly traded companies in both Canada and the US. With a focus on corporate financings, M&A and integration experience, he was previously the CFO for Skylight Health Group Inc. and Reclaim Inc. Prior to that, Andrew was Senior Vice-President and CFO at McEwen Mining Inc. where he managed equity and debt financings of over \$150M and multiple acquisitions. He also has held various senior leadership and treasury roles at Heinz UK, Diageo, and Worldcom UK. Andrew graduated from Oxford Brookes University, is a CPA in Ontario, and is Treasurer for the Canadian Network for the Prevention of Elder Abuse.



### **MARCEL ROBILLARD | DIRECTOR**

Mr. Robillard became President and CEO of Puma in 2010. He is currently a Director of PEZM Gold Inc. (PEZM-H) and reviewing potential strategic acquisition opportunities in the green energy sector. From 1998 to 2007, Marcel held the position of Project Geologist and Project Manager at Géominex, a geology and exploration consulting Company, before taking on the role of President from 2007 to 2015. Marcel has a B.Sc. in Geology and an M.Sc. in Earth Sciences from the Université du Québec à Montreal, Canada.



### **ANDRE TESSIER | DIRECTOR**

Mr. Tessier P.Eng, P.Geo., is a Professional Engineer and Geologist, involved in the mineral exploration and mining industry since 1989, including 16 years as Director, President and CEO of publicly traded Junior companies. Mr. Tessier started his career as Exploration Manager of the Quebec exploration office for Cominco Ltd in Noranda. He subsequently became geological consultant to the industry with clients from both the major and junior sectors in Canada, South and Central America and Central Asia. Mr. Tessier obtained his Engineering degree at Ecole Polytechnique in Montreal and his MSc in Economic Geology at Queen's University in Kingston. Mr. Tessier holds professional designations with Geoscientists of Ontario, Quebec, as-well as Professional Engineers of Ontario and Quebec.



# CANADIAN COPPER

Commodities that *electrify our world.*

## THANK YOU

Simon Quick *Chief Executive Officer*

[simon@canadiancopper.com](mailto:simon@canadiancopper.com)

905.220.6661





# CARIBOU HORIZON TREND CONSOLIDATION

Canadian Copper Property is 18km  
Connects two Former Producing Operations  
Underexplored with +30 Years Historical Production  
5 km from Highway #180

**Murray Brook West Project**

- 2,790 hectares
- Highly prospective & underexplored; untested geophysical anomalies
- Planned prospecting and trenching

**Restigouche Mine**  
Produced +40Mlbs of Zinc, Lead, and Silver

Highway #180

18km

Large Soil Anomaly

Fertile Horizon

Fault

**Murray Brook Deposit**

- 5,846 hectares
- 100% ownership;
- Advanced development stage asset
- +21Mt @ 1.42% CuEq; 98% M&I Resources

**Caribou Mine**  
Produced +700Mlbs of Zinc, Lead, and Silver

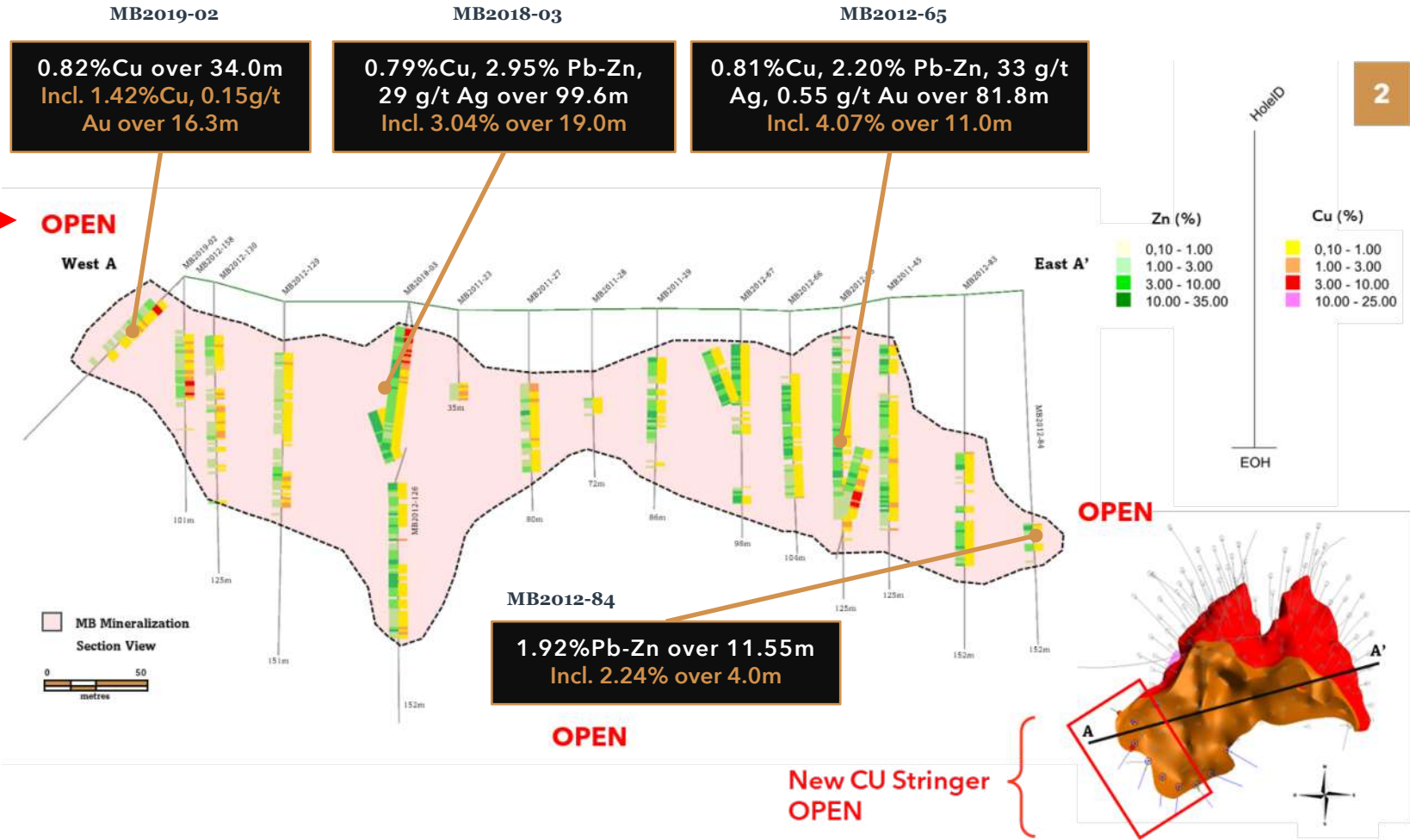
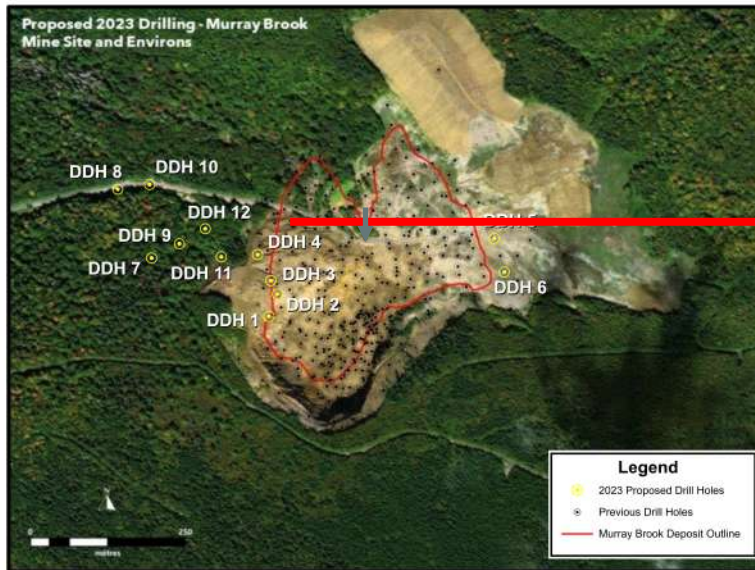
- Murray Brook Project
- CCAA Assets
- Caribou Fertile Horizon
- Highway #180

Active Exploration

Stripping (2018 Showing)



# MURRAY BROOK DEPOSIT DEFINING FURTHER EXTENSIONS



- **3000m drill program** planned testing extensions at the border of the 2023 MRE resource model and copper stinger zone (discovered 2019)<sup>1</sup>
- Copper stinger zone extends over **180m and to 170m at depth**
- Remains open along strike and at depth
- adjacent to the massive sulphide mineralization and corresponds to **a strong Megateme anomaly at depth**

<sup>1</sup>See press release titled: "Puma Exploration And Trevali Mining Corporation Drill 1.17 G/T Au, 0.50% Cu And 4.16% Zn + Pb Over 153.2 Meters At The Copper-gold Rich Zone Of The Murray Brook Deposit" disseminated on Globalnewswire by Puma Exploration Inc. on January 21, 2018.



# APPENDIX A: 2023 MINERAL RESOURCE<sup>1</sup>

**TABLE 1.1**  
**MURRAY BROOK IN-PIT MINERAL RESOURCE ESTIMATE AT CDS\$23/T NSR CUT-OFF<sup>(1 TO 9)</sup>**

Zone	Classification	Tonnes (k)	Cu (%)	Cu (Mlb)	Pb (%)	Pb (Mlb)	Zn (%)	Zn (Mlb)	Au (g/t)	Au (koz)	Ag (g/t)	Ag (Moz)	ZnEq (%)	CuEq (%)	NSR (CAD \$/t)
Oxide	Measured	1,641	1.05	37.9	0.73	26.6	2.20	79.6	0.36	19	38.0	2.0	5.94	1.85	156
	Indicated	373	0.97	7.9	0.78	6.4	2.31	19.0	0.51	6	44.7	0.5	6.02	1.88	158
	Measured + Indicated	2,014	1.03	45.9	0.74	32.9	2.22	98.6	0.39	25	39.2	2.5	5.95	1.86	157
Sulphide	Measured	15,830	0.43	150.8	0.92	322.2	2.60	908.3	0.52	264	39.0	19.8	4.83	1.51	115
	Indicated	5,275	0.52	60.9	0.85	98.9	2.14	248.9	0.67	114	37.3	6.3	4.58	1.43	114
	Measured + Indicated	21,105	0.45	211.7	0.91	421.1	2.49	1,157.2	0.56	378	38.6	26.2	4.77	1.49	115
	Inferred	110	0.41	1.0	0.68	1.6	1.82	4.4	0.62	2	30.4	0.1	3.75	1.17	92

<sup>1</sup> US metal prices \$4.00/lb Cu, \$1.25/lb Zn, \$0.95/lb Pb, and \$23/oz Ag at \$0.76 USD/CAD.

<sup>1</sup> Process recoveries used were 80% Cu, 87% Zn, 75% Pb, and 90% Ag.